

New Town Farm

Sew the 1-1/2" blue squares to the left side of the remaining gold strips, press.



Sew (4) sets together to make a strip, add a blue square at the end to complete the strip. Press.



Referring to the quilt picture, lay out rows of blocks and gold/blue strips. Sew together.

Sew borders on each side of the quilt, then the top and bottom. Sandwich and quilt.

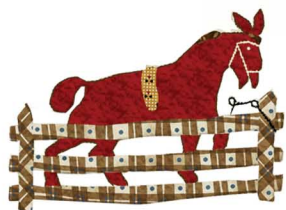
BORDERS:

Sew (2) 4-1/2" x 40" multi-colored strips to right and left sides. Add (2) 4-1/2" x 48" multi-colored strips to top and bottom. Press.

Add (2) 1-1/2" x 48" red strips to right and left sides.

Sew (2) 1-1/2" x 49.5" red strips to top and bottom. Press.

Layer quilt top, batting and backing and quilt to finish. Bind.



Be sure to visit www.windhamfabrics.com to see the complete collection and to download this and other Free Projects

 Windham Fabrics

812 Jersey Ave ~ Jersey City, NJ 07310 ~ 201.659.0444 ~ FAX: 201.659.9719 ~ info@windhamfabrics.com

P R O J E C T

New Town Farm

Designed by Joanie Holton & Melanie Greseth



Featuring Fabric from the
New Town Farm Collection by Colonial Williamsburg

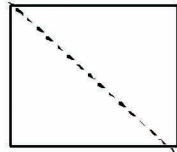
 Windham Fabrics

New Town Farm

New Town Farm designed by Joanie Holton & Melanie Greseth
Featuring fabrics from the New Town Farm Collection

FABRIC YARDAGE / CUTTING INSTRUCTIONS:

SKU # 29169-2 blue 1/2 yd
(16) 3-1/2" squares cut in half diagonally
(25) 1-1/2" squares



3-1/2 " square
cut example

SKU # 29171-3 light red 1/4 yd
(32) 2-1/2" squares

SKU # 29169-7 gold 5/8 yd
(40) 1-1/2" x 9 1/2" strips

SKU # 29163-X multi-color 1-3/4 yd
(8) 9-1/2" squares – fussy cut
(2) 4-1/2" x 40"
(2) 4-1/2" x 48"

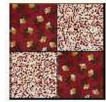
SKU # 29164-3 red 5/8 yd
(32) 2-1/2" squares
(16) 4-1/2" squares

SKU # 29169-3 red 3/8 yd
(2) 1-1/2" x 48"
(2) 1-1/2" x 49-1/2"
(5) 2-1/4" strips for binding

Backing 3 yds

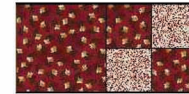
BLOCKS:

Sew (2) 29171-3 light red 2-1/2" squares and (2) 29164-3 red 2-1/2" squares together to make a four patch block.
Press. Repeat to make a total of 16 blocks.



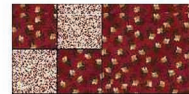
Add a red 4-1/2" square to the right side of the four patch block to make (8) sets (A).

Set A



Add a red 4 1/2" square to the left side of the four patch block to make (8) sets (B).

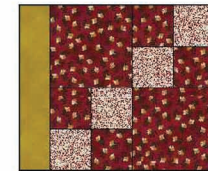
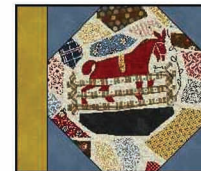
Set B



Referring to the quilt picture for placement, sew a set A and a set B together to complete (8) red blocks. Press

Sew four blue triangles to the corners of the (8) fussy cut 8-1/2" squares. Press.

Sew a gold 1-1/2" x 8-1/2" strip to the left side of each of the blocks, both the red block and the fussy cut block.



Lay out the blocks in order according to picture. Sew together in rows. Add a gold strip to the end to complete the row. Press.

