

Clara Barton's Cross of Love

Sewing Directions Continued:

Block 2a

Trace and cut out twenty-four tear drop shapes and circular shapes from the blue fabric. Trace and cut six center shapes.

Fold one 10 1/2" red square in half horizontally and press. Open, fold vertically and press, being careful not to press out the first fold. Use these folds to center your appliqué pieces and then fuse them in place. Secure the appliqué pieces by doing raw edge appliqué, using a zigzag or buttonhole stitch, depending on your preference. Make six of these blocks.



Block 2a



Block 2b

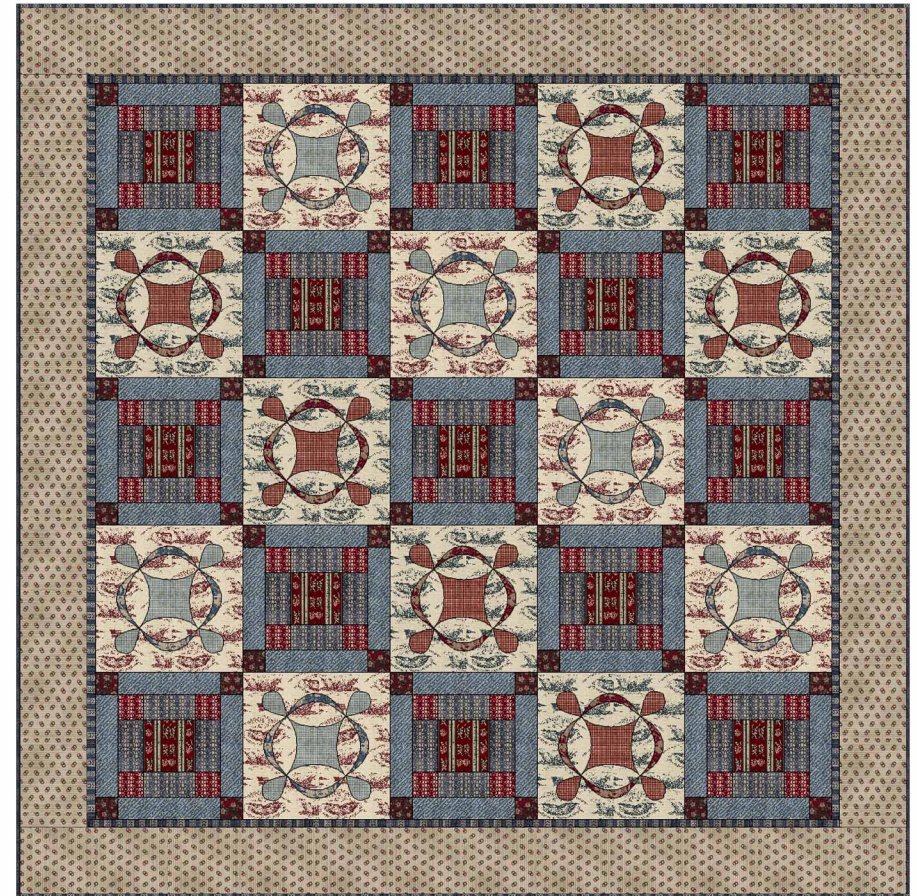
Block 2b

Repeat folding the blue squares, cutting, fusing and stitching the red appliqué pieces in place for this block. Make six of these blocks.

P R O J E C T

Clara's Barton's Cross of Love

Quilt designed by Barbara Campbell



Featuring Fabrics from the
Clara Barton Collection in Association with the Clara Barton Birthplace Museum

Be sure to visit www.windhamfabrics.com to the complete collection
and to download this and other free projects.

 Windham Fabrics

812 Jersey Ave ~ Jersey City, NJ 07310 ~ 201.659.0444 ~ info@windhamfabrics.com

 Windham Fabrics

Clara Barton's Cross of Love

Designed by Barbara Campbell
Featuring fabric from the Clara Barton Collection
in Association with the Clara Barton Birthplace Museum
Skill level: Beginner - Intermediate
Finished Quilt Size: 60" x 60"
Finished Block Size: 10"

Materials List:

1/4 yd. #30028-1 red (Block 1)
1/2 yd. #30032-1 red (Block 1)
1/4 yd. #30033-1 red (Block 1)
1/2 yd. #30033-2 blue (Block 1)
1 yd. #30034-1 red (Block 2b)
1 yd. #30034-2 blue (Block 2a)
1 yd. #30035-1 red (Block 2b)
1 yd. #30035-2 blue (Block 2a)
3/4 yd. #30038-2 blue (Inner Border and Binding)
1/2 yd. #30040-2 blue (Block 1)
1 1/2 yds. #30041-3 brown (Outer Border)
1 yd. #30042-1 Red (Block 2a)
1 yd. #30042-2 blue (Block 2b)
Paper-backed fusible web
65" x 65" piece of backing fabric
65" x 65" piece of batting

Cutting Instructions:

#30028-1, cut three 2" strips; recut into fifty-two 2" squares
#30032-1, cut thirteen 4 1/2" squares
#30033-1, cut three 2" strips; recut into fifty-two 2 1/4" squares
#30033-2, cut six 2 1/4" strips; recut into fifty-two 2 1/4" x 4 1/2" strips
#30034-1, cut appliqué pieces*
#30034-2, cut appliqué pieces*
#30035-1, cut appliqué pieces*
#30035-2, cut appliqué pieces*

Cutting Instructions continued:

#30038-2, cut seven 2 1/4" strips for binding and five 1" strips for inner border
#30040-2, cut three 4 1/2" strips; recut into fifty-two 4 1/2" x 2 1/4" strips
#30041-3, cut six 5" strips
#30042-1, cut six 10 1/2" squares
#30042-2, cut six 10 1/2" squares

* Trace the appropriate number of appliqué shapes on the paper side of the fusible web (shown in the illustration).. Cut out loosely around the drawn line and fuse to the back of the appropriate fabrics. Cut on the drawn line. If you prefer to appliqué in the traditional needle turn method, add 1/4" seam allowance to the pattern pieces.

Sewing Directions:

Block 1

Following the diagram below, sew one blue 2 1/4" x 4 1/2" strip to either side of the 4 1/2" center square.
Sew two red 2 1/4" squares to either side of a blue 2 1/4" x 4 1/2" strip. Repeat and attach to the top and bottom of the block center.
Sew two blue 2" strips to the sides of the block. Attach two red 2" squares to each side of two strips and sew to the top and bottom of the block. Repeat to make thirteen blocks.



Clara Barton's Cross of Love

Quilt Assembly:

Following the Quilt Layout Diagram, assemble the blocks into rows and sew the rows together to finish the quilt center. The top should measure 50 1/2" square.

Cut one 1" blue strip into quarters and stitch one piece to the each of the four strips. Trim two to 50 1/2" and attach to the sides of the quilt.

Measure and trim the other two strips to 51 1/2" and sew to the top and bottom of the quilt.

Cut two of the brown 5" strips in half and attach one half to each of the remaining four strips.

Measure and cut two strips to 51 1/2" and attach to the sides of the quilt. Trim the final two border pieces to 60 1/2" and sew to the top and bottom of the quilt.

Quilting:

Layer the quilt top on the batting and the wrong side of the backing. Quilt as desired.

Binding:

Sew the six 2 1/4" blue strips together to make one long strip. Fold in half with wrong sides together and press. Trim batting and backing even with the quilt top and sew on the binding, mitering the corners. Fold the binding over to the back and hand stitch in place. Don't forget to add a label to your masterpiece!

ENJOY!

Barbara Campbell is a professional designer from Pine Brook, NJ. You can contact her by email at Barbara@loveinstitches.com or visit her web site at www.loveinstitches.com.

Templates:

Shapes do not include seam allowance

