

“Black and White in Color”

Designed by Ashley Newcomb, of blog *Film in the Fridge*
Featuring the Sylvia and Mormor collections by Lotta Jansdotter
Finished Size: 66 x 67.5”



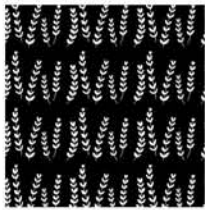
Check www.windhamfabrics.com Free Project section to see if there are any pattern updates before you start your quilt

WINDHAM *W* **FABRICS**

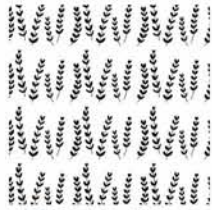
812 Jersey Ave ~ Jersey City, NJ 07310 ~ 201.659.0444 ~ FAX: 201.659.9719
www.windhamfabrics.com email: retail@windhamfabrics.com

“Black and White in Color”

Page 2



37123-1 Black



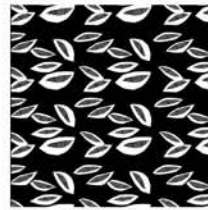
37123-2 White



37125-1 Black



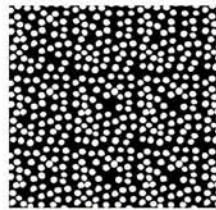
37125-2 White



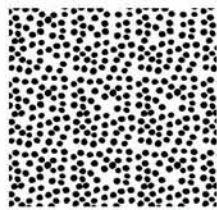
37124-1 Black



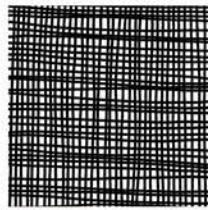
37124-2 White



35215A-1 Black



35215A-2 White



33405B-2 White



37119-7 Rubine



37116-2 Coral



37118-5 Myer

Yellow



37116-3 Emerald



37116-4 Mint



37119-10 Eggplant

Plus assorted solids
as noted in fabric requirements.

Play up Lotta Jansdotter’s black and white prints from her Sylvia collection by pairing them with bold solids in this great quilt. The large tumbler shape provides a chance to show off larger pieces of the prints, while the solids make a brightly colored rainbow in the background.

Fabric Requirements:

(number in parentheses indicates the # of tumblers to cut from each fabric)

Sylvia: 1 fat quarter of each print

- Fabric 1 - 37123-1 Black (7)
- Fabric 2 - 37123-2 White (7)
- Fabric 3 - 37125-1 Black (6)
- Fabric 4 - 37125-2 White (8)
- Fabric 5 - 37124-1 Black (7)
- Fabric 6 - 37124-2 White (7)
- Fabric 7 - 35215A-1 Black (7)
- Fabric 8 - 35215A-2 White (8)
- Fabric 9 - 33405B-2 White (9)

Mormor: 1 8” square of each print

- Fabric 10 - 37119-7 Rubine (1)
- Fabric 11 - 37116-2 Coral (1)
- Fabric 12 - 37118-5 Myer Yellow (1)
- Fabric 13 - 37116-3 Emerald (1)
- Fabric 14 - 37116-4 Mint (1)
- Fabric 15 - 37119-10 Eggplant (1)

“Black and White in Color”

Page 3

Solids: 1 fat quarter of each color

Fabric A – red (4 + 2 – 1/2s)

Fabric B – dark pink (3 + 2 – 1/2s)

Fabric C – medium pink (3 + 3 – 1/2s)

Fabric D – light pink (3)

Fabric E – orange (4 + 2 – 1/2s)

Fabric F – dark coral (3 + 1 – 1/2)

Fabric G – light coral (4 + 2 – 1/2s)

Fabric H – yellow (4)

Fabric I – yellow/green (3)

Fabric J – dark aqua (3 + 1 – 1/2)

Fabric K – medium aqua (3 + 1 – 1/2)

Fabric L – light aqua (5 + 2 – 1/2s)

Fabric M – dark purple (3 + 4 – 1/2s)

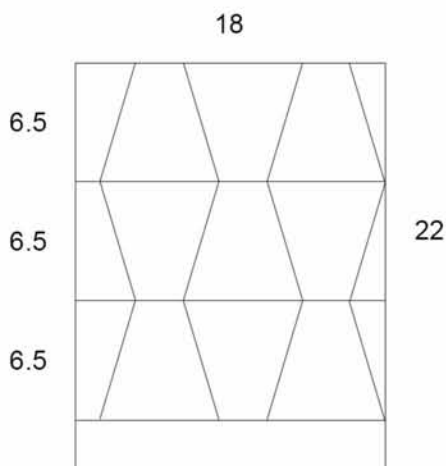
Fabric N – medium purple (4 + 2 – 1/2s)

Fabric O – dark gray – 1 1/2 yards (1 yard for strips alongside tumblers,
1/2 yard for binding)

Fabric P – medium gray – 4 yards for backing

Cutting Diagrams:

Sylvia prints:



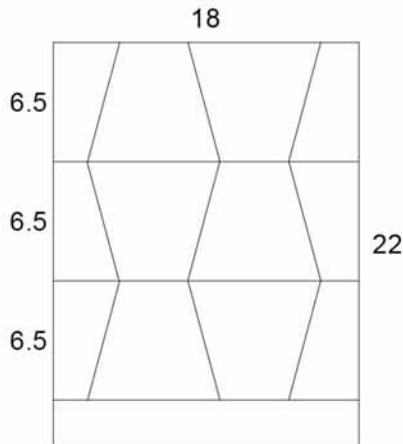
Cut tumblers from the Sylvia fat quarters (fabrics 1-9) as shown above (using Tumbler Template 1). Refer to the number shown in parentheses in the fabric requirements section for the number of tumblers needed for each print.

[Tumblers measure 6 1/2" in height, 2 1/2" along top edge, and 6 1/2" along bottom edge.]

“Black and White in Color

Page 4

Solids:



Cut tumblers and half tumblers from the solid fat quarters (fabrics A-N) and from the Mormor squares (fabrics 10-15) as shown above (using Tumbler Template

2). Refer to the number shown in parentheses in the fabric requirements section for the number of tumblers & half tumblers needed for each print.

[Tumblers measure 6 ½” in height, 4” along top edge, and 8” along bottom edge. Half tumblers measure 6 ½” in height, 2” along top edge, and 4” along bottom edge.]

See next page for QUILT ASSEMBLY DIAGRAM.

Assembling the quilt top:

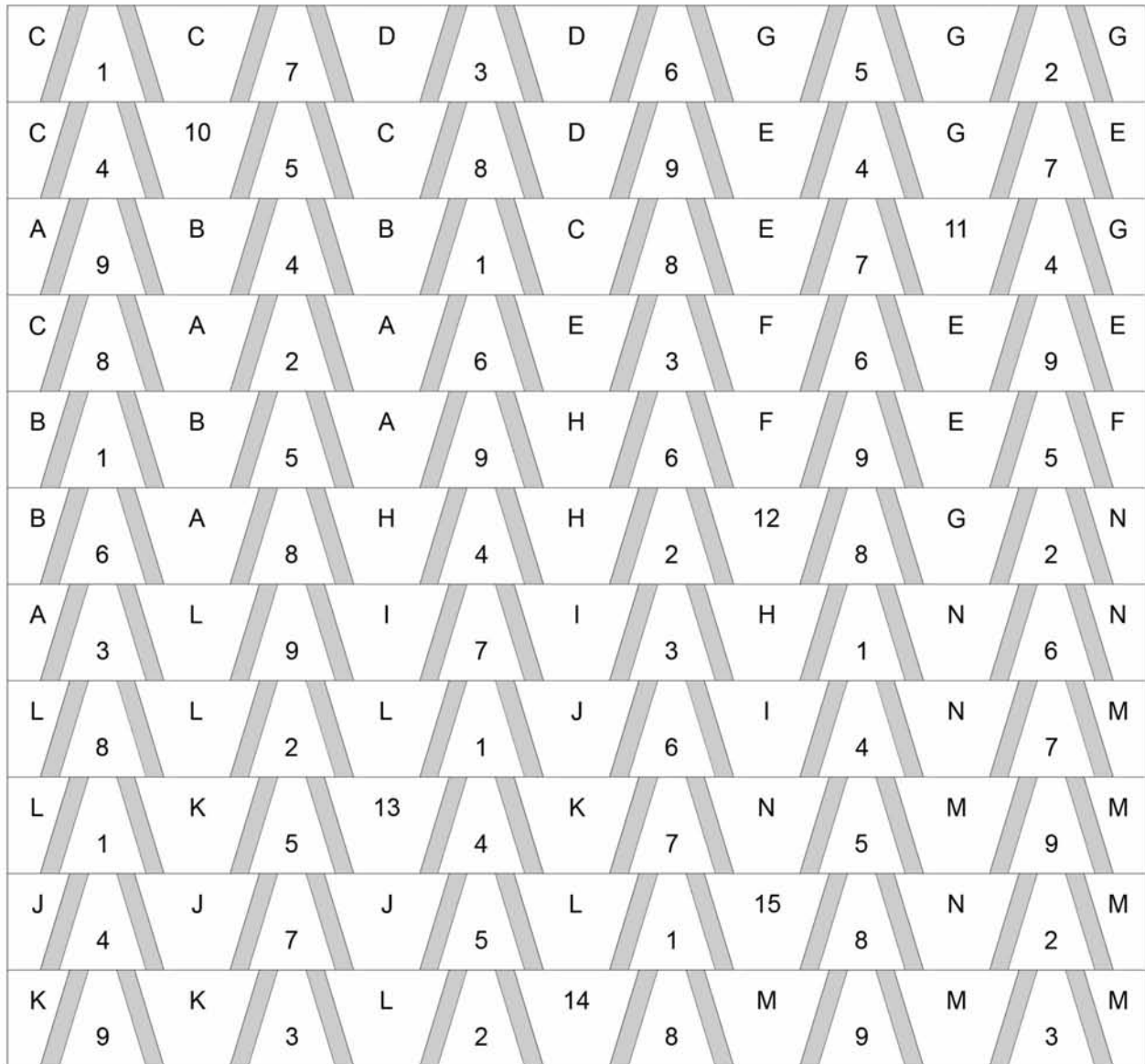
Note: ¼” seam allowance throughout

Cut tumbler blocks from Lotta Jansdotter’s Sylvia prints using Tumbler Template 1 and following the cutting diagram shown at the beginning. Cut tumbler blocks for solids (Fabrics A-N) from Tumbler Template 2. Number of tumblers (and half tumblers) are noted above in the fabric requirements section in parentheses.

“Black & White in Color”

Page 5

Quilt Diagram:

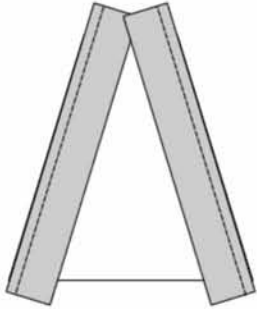


(shaded strips are fabric O – dark gray)

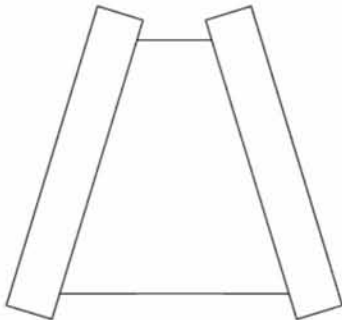
“Black and White in Color”

Page 6

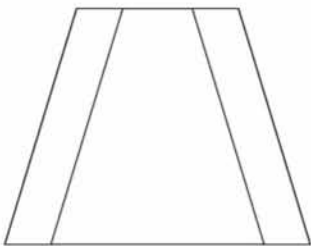
From the dark gray fabric, cut 27 strips 1 ¼” across the width of fabric. Subcut into 8” pieces (5 pieces per strip).



Sew one dark gray strip to either side of each of the Lotta Jansdotter Sylvia tumblers, making sure to offset the dark gray strip by at least ½” at the top, as pictured.



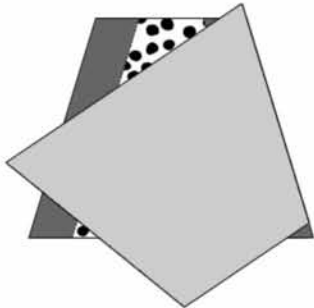
Iron seams open.



Trim charcoal strips even along the top and bottom edges.

“
”Black and White in Color”

Page 7



Sew tumbler blocks together in rows, according to the quilt diagram, alternating solid and printed tumbler blocks. Align tumbler blocks right sides together, offsetting the blocks by $\frac{1}{4}$ " as shown above.

Iron seams. Sew rows together in pairs, then sew pairs together until all rows are sewn together. Completed quilt top should measure about 65" x 66.5".

Assembling the backing:

From the backing fabric (medium gray), cut the 4 yard piece in half so you have two pieces measuring 72" x width of fabric. Trim selvages from both pieces. Sew together along the long edge. Trim excess from one side so backing piece measures about 72" x 72".

Finishing:

1. Layer the backing, batting, and top. Baste as desired.
2. Quilt as desired.
3. Trim the edges to square the quilt.
4. Cut 7 2.5" strips from remaining charcoal fabric (fabric O). Make and attach the binding, following your desired binding method.

Questions, please contact:

Ashley Newcomb
Filminthefridge.com

Enjoy! And be sure to visit www.windhamfabrics.com for this
and other **FREE PROJECTS!**

