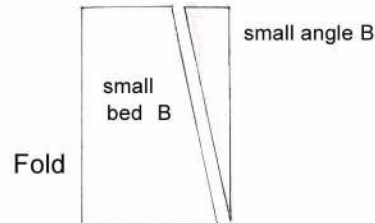


"Beddy Byes"

- 6. Small Beds Block** (11-1/2" x 16-1/2") Four (4) beds in each rectangular block
Small Template B
Choose 16 small prints and cut out small beds. Diagram 3
See page 3 for template.

Diagram 3



Template B (small angle sides)

Cut (16) sets (mirror images) of angle sides from the background fabric 30020-5 ivory. See page 3 for template

Rectangles

Cut (32) rectangles from background fabric 30020-5 ivory 1-1/2" x 2"

Cut (16) 30020-5 ivory rectangles 1-1/2" x 4-1/4" (lower background)

7. Small Headboard

Cut (16) assorted rectangles 2" x 4-1/4" from the 30017 prints; Cut (4) 30017-1 red / Cut (8) 30017-2 blue / Cut (4) 30017-3 green

8. Small Bed Feet

Cut (32) squares 1-1/2" x 1-1/2" (match feet print pattern with the headboard)

9. Method for 16 Small Beds (Four beds for each rectangular block)

A. Sew side angles onto selected 16 different beds.

B - Sew top background rectangles to the small headboards and stitch the top to the small beds.

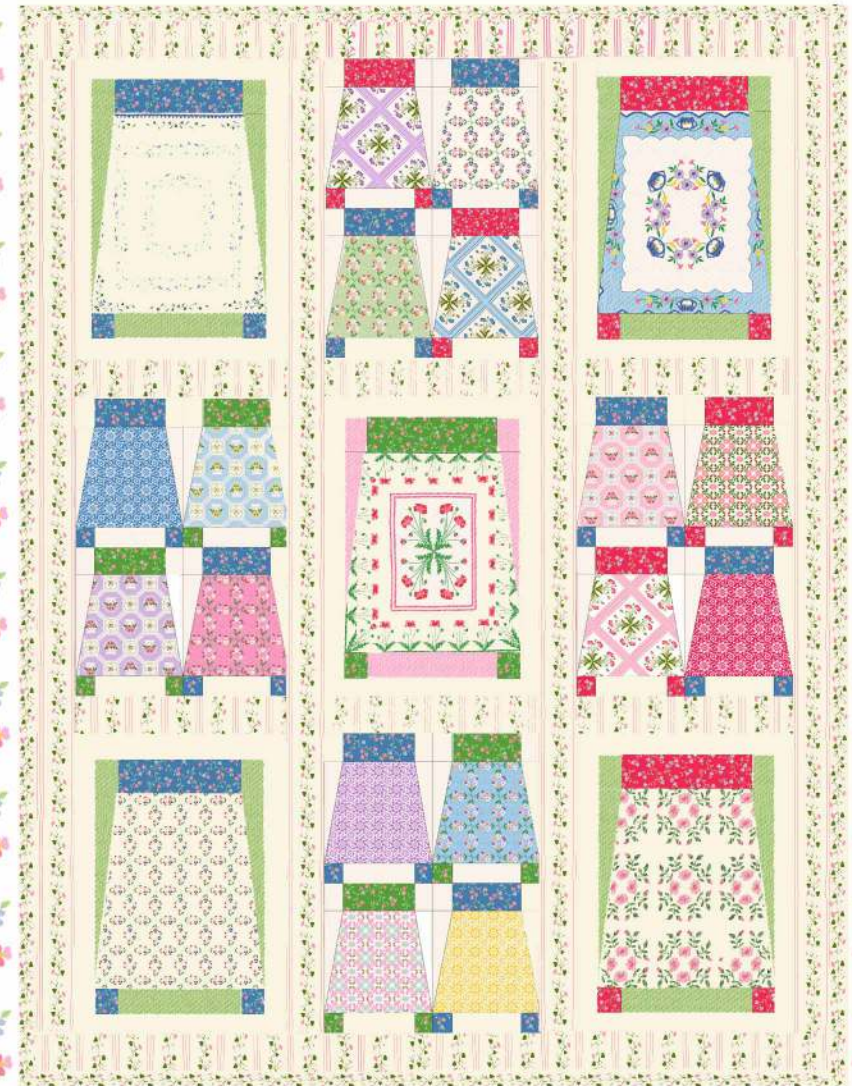
C - Sew the matching small bed feet to each side of the background fabric and sew this to the bottom of the small beds.

Note: You can follow layout as given for large bed stitching

D - Select 4 beds for each block and sew in four patch to create four (4) blocks

Beddy Byes

Quilt Designed by Georgia Bonesteel



Featuring Fabric from the Marie Webster Collection
by Georgia Bonesteel in Association with the Quilter's Hall of Fame

Be sure to visit www.windhamfabrics.com to see the complete collection and to download this and other free projects

 Windham Fabrics

812 Jersey Ave ~ Jersey City, NJ 07310 ~ 201.659.0444 ~ FAX: 201.659.9719 ~ info@windhamfabrics.com

 Windham Fabrics

"Beddy Byes"

Designed by Georgia Bonesteel

Featuring fabric from the Marie Webster Collection designed by Georgia Bonesteel in association with the Quilter's Hall of Fame

Finished Quilt Size: 42 1/2" x 57 1/2"

Fabric Requirements:

SKU #30016X Multi - 2/3 yd	SKU #30020-1 Pink - 1 fat quarter
SKU #30017-1 Pink - 1 fat quarter	SKU #30020-3 Green - 1 fat quarter
SKU #30017-2 Blue - 1 fat quarter	SKU #30020-5 Ivory - 1 fat quarter
SKU #30017-3 Green - 1 fat quarter	SKU #30022-1 Pink - 1 fat quarter
SKU #30018-1 Pink - 1 fat quarter	SKU #30022-2 Blue - 1 fat quarter
SKU #30018-2 Blue - 1 fat quarter	SKU #30022-6 Purple - 1 fat quarter
SKU #30018-4 Yellow - 1 fat quarter	SKU #30023-1 Pink - 1 fat quarter
SKU #30018-6 Purple - 1 fat quarter	SKU #30023-2 Blue - 1 fat quarter
SKU #30019-1 Pink - 1 fat quarter	SKU #30024-1 Pink - 1 fat quarter
SKU #30019-2 Blue - 1 fat quarter	SKU #30024-2 Blue - 1 fat quarter
SKU #30019-3 Green - 1 fat quarter	SKU #30024-6 Purple - 1 fat quarter
SKU #30019-5 Ivory - 1 fat quarter	

SKU #30021-1 Pink - 3 1/3 yds for sashing, backing and binding



1. Large Bed A - Diagram 1

Choose five (5) of Marie's favorite quilt rectangles from the panel sampler.

Hint: Select ones that have a dark side border.

Trim to 10" x 11-1/2" leaving equal light borders on all sides for the seam allowance.

Fold in half the long way with the right sides together. Mark 1-1/4" in from the top corner. Draw a line from that line to the bottom corner to create the sewing angle. cut that excess off. This cut includes the seam allowance.

See Diagram 1

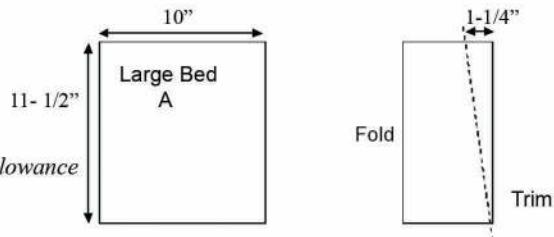


Diagram 1

Trim angle includes seam allowance

2. Background of Large bed:

Template A (Large angle sides)

Cut four (4) sets (mirror images) of angle sides from green fabric #30020-3 and one (1) set from pink fabric #30020-1. See Diagram 2

Diagram 2



This is the same size as trim from Diagram 1 - Add 1/4" seam allowance on all sides - see page 3 for template

Cut mirror image to make each side of bed

Rectangles

Cut eight (8) rectangles from the green fabric and cut two (2) rectangles from the pink measuring 1-3/4" x 2"

Cut four (4) rectangles in green and cut one (1) rectangle in pink measuring 2" x 7-1/2"

3. Head Board and Feet

Large Bed Headboard

Cut five (5) rectangles 2" x 7-1/2" as follows:

Cut (2) 30017-1 red / Cut (2) 30017-2 blue / Cut (1) 30017-3 green

Large Bed Feet

Cut (10) rectangles 1-3/4" x 2" (match feet prints with headboard)

4. Log Cabin Borders

Cut (5) rectangles 1-1/2" x 10" using #30020-5 ivory / Cut (5) rectangles 1-1/2" x 16" using 30020-5 ivory / Cut (5) rectangles 1-1/2" x 11" using 30020-5 ivory / Cut (5) rectangles 1-1/2" x 17" using 30020-5 ivory

5. Method for stitching five (5) large Beds

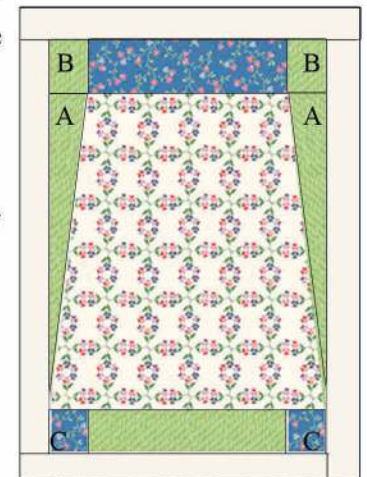
A - Sew the angle background sides to the large bed.

B - Sew top background rectangles to the small headboards and stitch to the top of the quilt.

C - Sew the large bed feet on each side of the background and sew to the bottom of the quilt.

D - Sew the borders ala log cabin style starting at the top going clockwise for completion.

Repeat 4 more times to make total of five (5) large beds.



"Beddy Byes"

10. Borders:

Using the Striped floral #30021-1 pink cut lengths for sashing and borders.

Cut (6) striped floral fabric 2-1/2" x 12" for spacers between blocks.

Cut (4) striped floral fabric 2-1/2" x 54" as long vertical strips between blocks and the outside edges on each side.

Cut (2) striped floral fabric 2-1/2" x width of fabric for top and bottom borders.

**Hint: Cut the vertical strips and top and bottom borders 1" longer for quilters insurance, but mark with a pin the exact dimension needed*

11. Backing:

Cut backing fabric and batting 44" x 59"

Layer top, batting and backing. Quilt in your favorite manner.

12. Binding:

Cut a 25" square of fabric and cut 2-1/2" wide strips on bias for binding. Piece these together with 45 degree angle cuts and bind off edges of quilt. You can also cut on the straight of grain and piece together lengths as needed for each side.

ENJOY!!

