

“Ava’s Garden”

Designed by Kristy Daum
Featuring the Ava collection by Whistler Studios
Finished Size: 66 x 79”



Check www.windhamfabrics.com Free Project section to see if there are any pattern updates before you start your quilt

WINDHAM *W* **FABRICS**

812 Jersey Ave ~ Jersey City, NJ 07310 ~ 201.659.0444 ~ FAX: 201.659.9719
www.windhamfabrics.com email: retail@windhamfabrics.com

“Ava’s Garden”

Page 2



39417-X



39418-X



39419-X



39422-5



39421-1



39421-3



39421-4

Fabric Requirements

39417-X 5/8 yard

39418-X 3 yards

39419-X 3/8 yard

39422-5 1/2 yard

39421-1 5/8 yard

39421-3 1/2 yard

39421-4 1 yard

Backing 5 yards Fabric of choice

Binding 39421-1 5/8 yard

Before You Begin:

- Read through all directions first
- All seam allowances are a scant 1/4"
- RST stands for “Right Sides Together”
- WOF stands for “Width of Fabric”
- Fabric requirement assumes 40” between selvages
- Extra fabric will be required if using directional prints

“Ava’s Garden”

Page 3

Cutting Instructions (Blocks):

Pink 39421-4

- Cut (8) WOF strips 2" wide. Sub cut (7) of those strips into (11) rectangles each measuring 2" x 3 1/2", for a total of (77) rectangles. Take the other (1) WOF strip and cut (3) rectangles 2" x 3 1/2". This gives you a total of (80) rectangles.
- Cut (4) WOF strips 3 7/8" wide. Sub cut those strips into (10) squares each measuring 3 7/8" x 3 7/8", for a total of (40) squares. Then cut each square once diagonally to create (80) triangles.

Brown Floral 39422-5

- Cut (8) WOF strips 2" wide. Sub cut (7) of those strips into (11) rectangles each measuring 2" x 3 1/2", for a total of (77) pieces. Take the other (1) WOF strip and cut (3) rectangles 2" x 3 1/2". This gives you a total of (80) rectangles

Green 39421-3

- Cut (4) WOF strips 3 7/8" wide. Sub cut those strips into (10) squares each measuring 3 7/8" x 3 7/8", for a total of (40) squares. Then cut each square once diagonally to create (80) triangles.

Red 39421-1

- Cut (2) WOF strips 3 1/2" wide. Sub cut those strips into (11) squares each measuring 3 1/2" x 3 1/2", for a total of (22) squares. You will only need (20) of those.

Small Scattered Roses 39419-X

- Cut (4) squares measuring 9 1/2" x 9 1/2".

Big Scattered Roses 39417-X

- Cut (8) squares measuring 9 1/2" x 9 1/2".

Letter Print 39418-X

- Cut (4) squares measuring 14" x 14". Then cut each square twice diagonally to create (16) triangles. You will only need (14) of the (16) you cut.
- Cut (2) squares measuring 7 1/2" x 7 1/2". Then cut each square once diagonally to create (4) triangles.

Cutting Instructions (Borders):

Red 39421-1

- Cut (7) WOF strips 2" wide.

Letter Print 39418-X

- Cut (8) WOF strips 3 1/2" wide.

“Ava’s Garden”

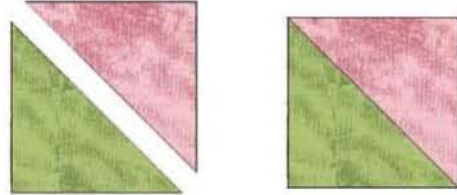
Page 4

Piecing The Blocks:

Block A

Start with (1) Green $3\frac{7}{8}$ " triangle and (1) Pink $3\frac{7}{8}$ " triangle. Sew the triangles RST. Press.

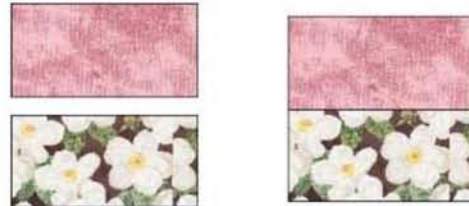
Make 80 of Block A.



Block B

Start with (1) Pink 2 " x $3\frac{1}{2}$ " rectangle and (1) Brown Floral 2 " x $3\frac{1}{2}$ " rectangle. Sew them RST. Press.

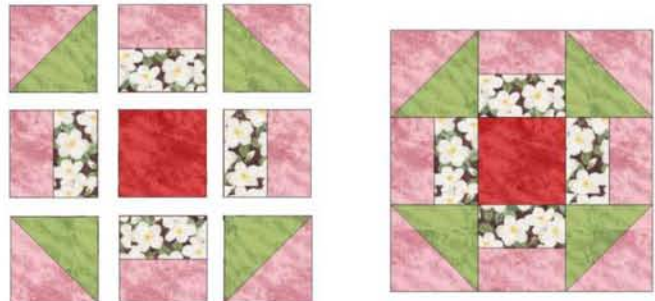
Make 80 of Block B.



Block C

Start with (1) Red $3\frac{1}{2}$ " x $3\frac{1}{2}$ " square. Layout (4) of Block A and (4) of Block B as shown in diagram. Sew blocks RST into rows first. Press. Sew rows together as shown. Press.

Make 20 of Block C.



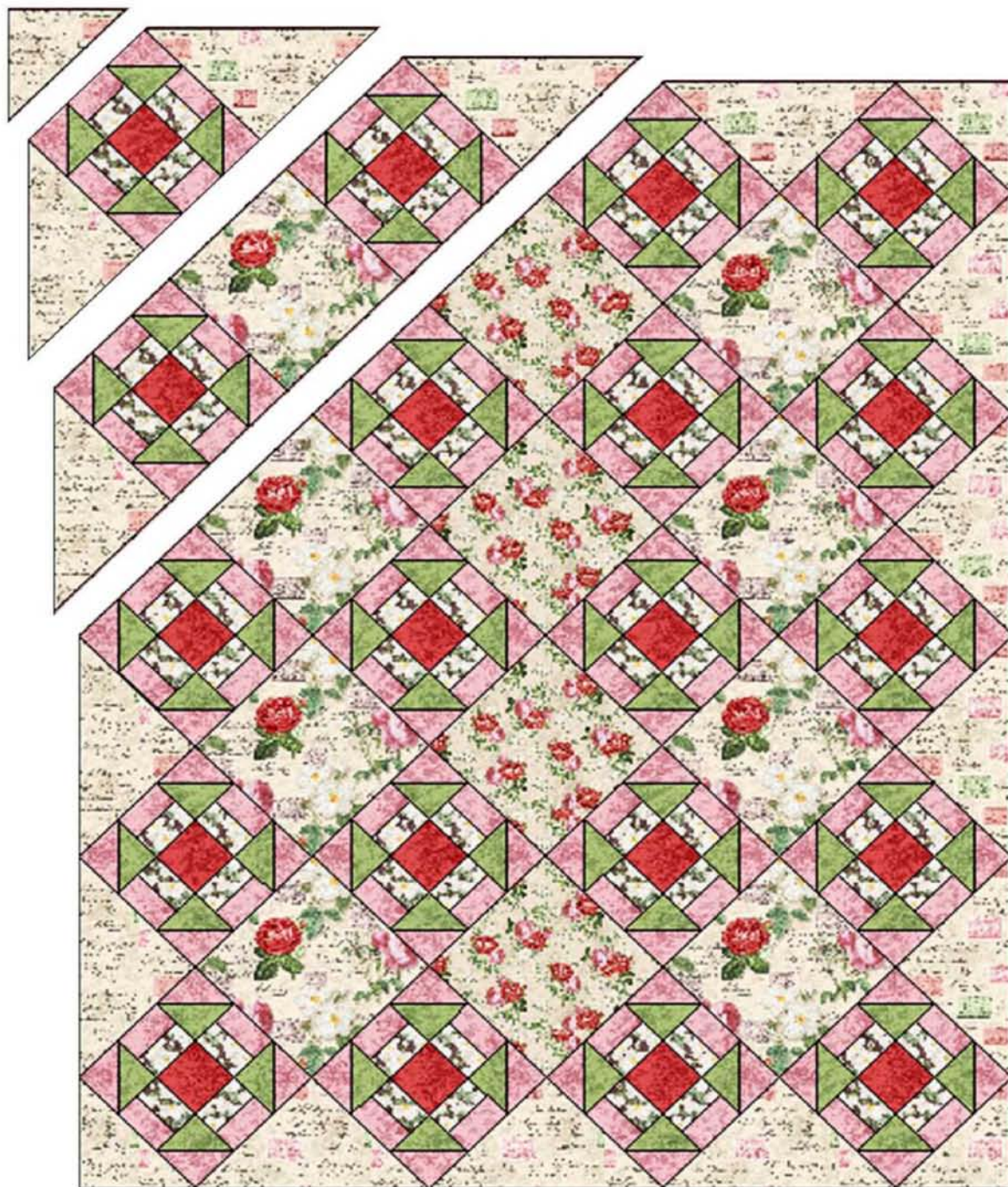
Laying Out Your Blocks & Sewing Rows:

Using the diagram below, lay out Block C, Letter Print triangles and corner blocks, Small Scattered Rose squares and Big Scattered Rose squares accordingly. Sew the blocks into rows RST, then rows RST being sure to match the blocks, not the corner triangles as they will be larger than needed. Press and square the quilt top.

“Ava’s Garden”

Page 5

Layout Diagram



“Ava’s Garden”

Page 6

Adding Borders:

Red Border

- Sew (2) WOF lengths together, along the short side. This will create the left border.
- Repeat the step above 1 more time, creating the right border.
- Sew the left and right borders onto the pieced top, press and carefully square up your quilt top.
- Cut (1) WOF length in half, creating (2) strips 2” x 20”.
- Sew (1) WOF strip to (1) of the newly cut 2” x 20” strips, along the short side. This will create the top border.
- Repeat the step above 1 more time, creating the bottom border.
- Sew the top and bottom borders onto the pieced top, press and carefully square up your quilt top.

Letter Print Border

- Sew (2) WOF lengths together, along the short side. This will create one of your border pieces.
- Repeat the step above 3 more times, creating all (4) borders.
- Sew the left and right borders onto the pieced top, press and carefully square up your quilt top.
- Repeat the step above for the top and bottom border.

Finishing The Quilt:

- Due to the size of the quilt, you will need to piece the back. Please be sure to leave a minimum of 4” excess on all sides for ease of quilting.
- Press your quilt top and backing, so they are wrinkle-free and flat.
- Layer your quilt top, batting and backing.
- Baste.
- Quilt as desired.
- Bind the quilt using your favorite method.

**Always look on our website before starting your project to see
if there are any updates or corrections**

**Be sure to visit www.windhamfabrics.com to see the complete collection
and to download other Free Projects**