

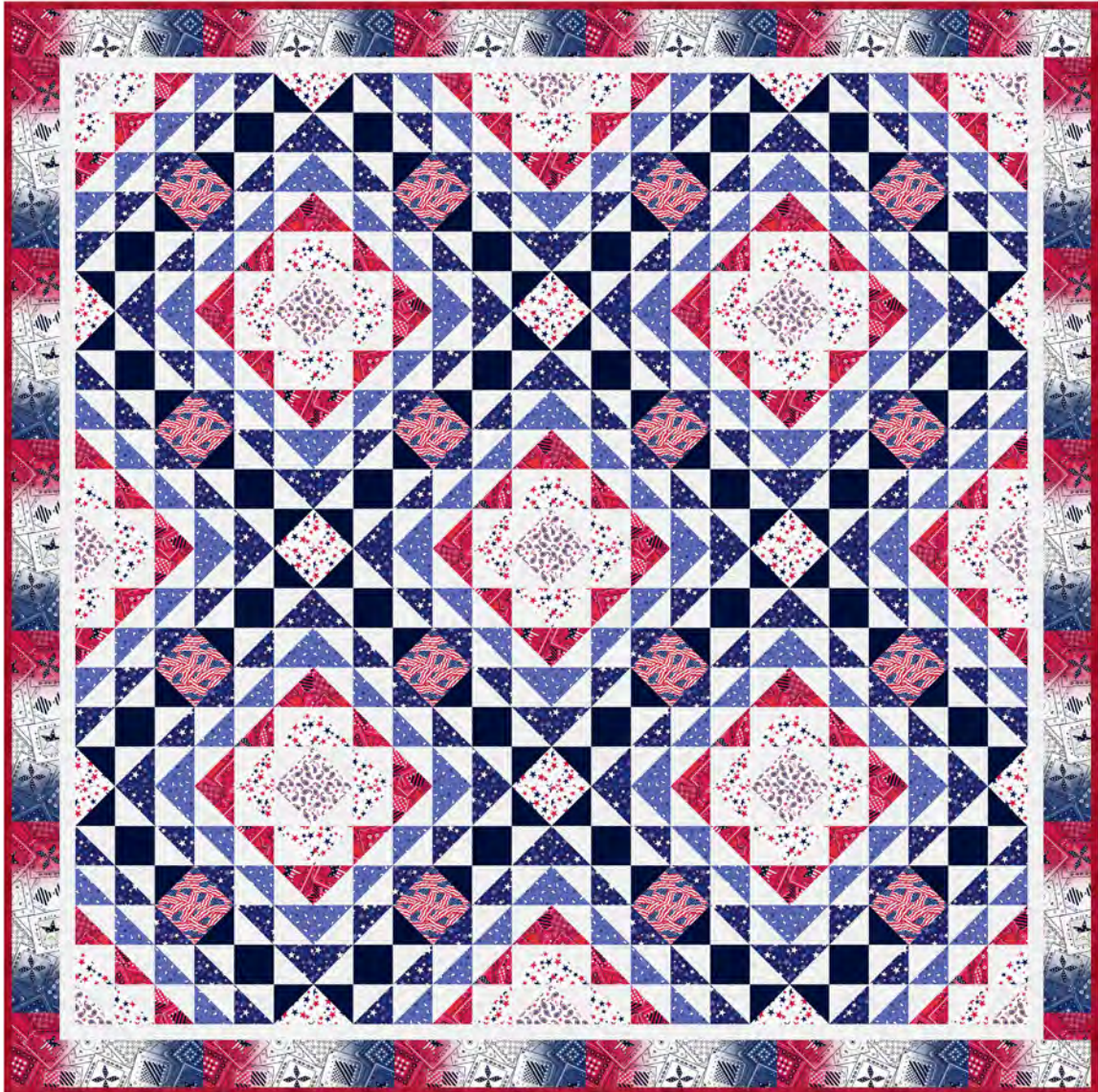
BEGINNER
SKILL

Sea to Shining Sea

designed by Natalie Crabtree

featuring *Americana* by Whistler Studios, *Palette* by Marcia Derse,
and *Ruby + Bee Solids* by Heather Ross and Annabel Wrigley

SIZE: 68" x 68"

FREE
PROJECT

THIS IS A DIGITAL REPRESENTATION OF THE QUILT TOP, FABRIC MAY VARY.

PLEASE NOTE: BEFORE MAKING YOUR PROJECT, CHECK FOR ANY PATTERN UPDATES AT WINDHAMFABRICS.COM FREE PROJECTS SECTION.



Sea to Shining Sea

KEY	FABRIC	SKU	YD	CUTTING INSTRUCTIONS
A		AMERICANA 53051-1 Ombre	1	(8) 3 1/2" x WOF strips. Piece strips for length short end to short end and matching the colors at either end of the ombre strips while assembling. This will make the seams appear less noticeable. (For more variation in the ombre while subcutting Outer Border strips, you may opt to cut 1-2 more WOF strips. This will allow you room to subcut unique Outer Border strips by placing the ombre colors in different locations during subcutting.) Subcut the following: (2) 3 1/2" x 62 1/2" Side Outer Borders. (2) 3 1/2" x 68 1/2" Top/Bottom Outer Borders.
B		AMERICANA 53051-2 Red	1/2	(4) 3 1/2" x WOF strips. Subcut (48) 3 1/2" squares.
C		AMERICANA 53052-2 Red	1/2	(3) 3 1/2" x WOF strips. Subcut (32) 3 1/2" squares.
D		AMERICANA 53052-6 White on White	2 3/8	(7) 1 1/2" x WOF strips. Piece strips for length using diagonal seams. From the long strip, subcut the following: (2) 1 1/2" x 60 1/2" Side Inner Border strips. (2) 1 1/2" x 62 1/2" Top/Bottom Inner Border strips. (19) 3 1/2" x WOF strips. Subcut (224) 3 1/2" squares.
E		AMERICANA 53053-4 White	3/8	(2) 3 1/2" x WOF strips. Subcut (16) 3 1/2" squares.
F		AMERICANA 53053-5 Royal	3/4	(6) 3 1/2" x WOF strips. Subcut (64) 3 1/2" squares.
G		AMERICANA 53054-3 Navy	7/8	(7) 3 1/2" x WOF strips. Subcut (80) 3 1/2" squares.
H		AMERICANA 53054-4 White	1/2	(4) 3 1/2" x WOF strips. Subcut (48) 3 1/2" squares.
I		PALETTE 37098-22 Cardinal INCLUDES BINDING	3/4	FOR BINDING: (8) 2 1/4" x WOF strips for binding.
J		RUBY + BEE SOLIDS 51583-14 Night Sky	3/4	(3) 3 1/2" x WOF strips. Subcut (32) 3 1/2" squares. (3) 3" x WOF strips. Subcut (32) 3" squares.
		Backing	4 1/4	Batting 76" x 76"

RST = RIGHT SIDES TOGETHER, WOF = WIDTH OF FABRIC

PROJECT DISCLAIMER: Every effort has been made to ensure that all projects are error free. All the information is presented in good faith, however, no warranty can be given nor results guaranteed. Therefore, we assume no responsibility nor damages that may occur when referring to this pattern. When errors are brought to our attention, we make every effort to correct and post a revision as soon as possible. We suggest you check windhamfabrics.com for pattern updates and to test the pattern prior to making the project. Test templates first, before cutting all the pieces. Free projects are not for resale.



Sea to Shining Sea

PIECING INSTRUCTIONS

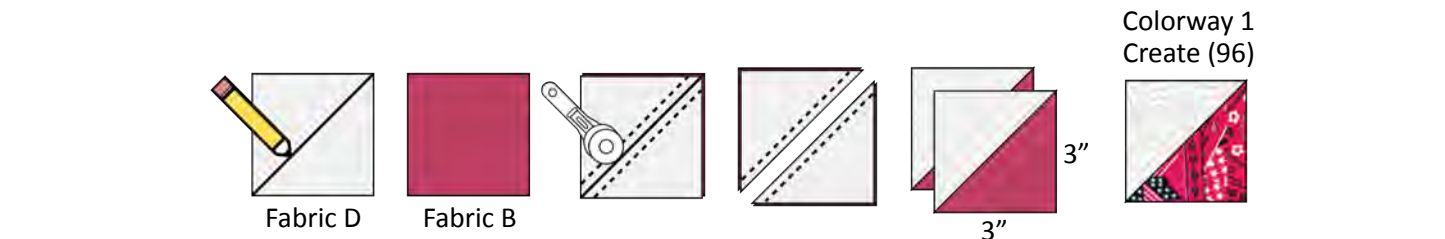
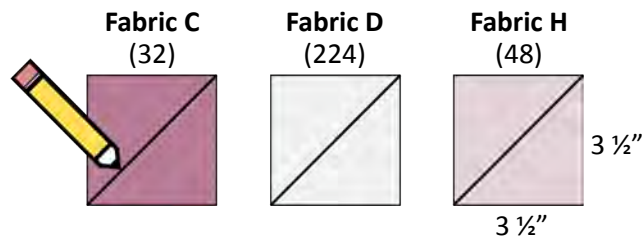
BLOCK ASSEMBLY:

1. Each block contains (8) HST unit colorways (*Colorways 1-8*). To prepare for HST unit assembly for all colorways, draw a diagonal line on the wrong side of (32) 3 1/2" **Fabric C** squares, (224) 3 1/2" **Fabric D** squares and (48) 3 1/2" **Fabric H** squares.

2. To begin HST unit assembly for Colorway 1, place (48) 3 1/2" **Fabric D** squares with (48) 3 1/2" **Fabric B** squares, RST and edges aligned.

3. Sew a 1/4" away from either side of the drawn diagonal line on each set of squares.

4. Cut along the drawn diagonal line on each set of squares, creating a total of (96) Colorway 1 HST units. Trim HST units to measure 3" x 3" unfinished.



5. Repeat HST unit assembly instructions to make the following quantities of HST unit Colorways 2-8. Trim all HST units to measure 3" x 3" unfinished. HST unit colorway examples are shown in the diagram below.

a. Colorway 2: Create (32)

Fabrics D and E

b. Colorway 3: Create (128)

Fabrics D and F

c. Colorway 4: Create (128)

Fabrics D and G

d. Colorway 5: Create (64)

Fabrics D and H

e. Colorway 6: Create (32)

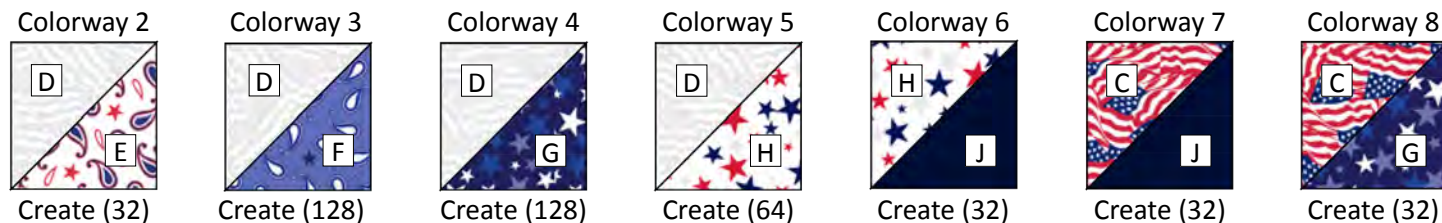
Fabrics H and J

f. Colorway 7: Create (32)

Fabrics C and J

g. Colorway 8: Create (32)

Fabrics C and G

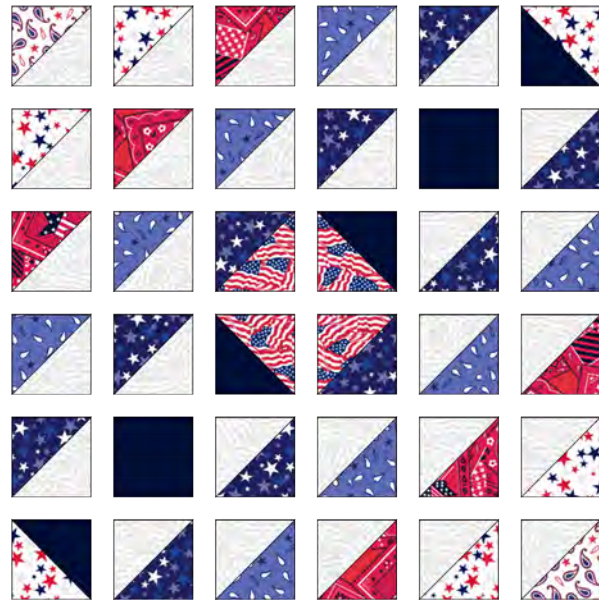




Sea to Shining Sea

6. To create (1) block, gather the following quantity of HST units from Colorways 1-8 along with (2) 3" Fabric J squares:

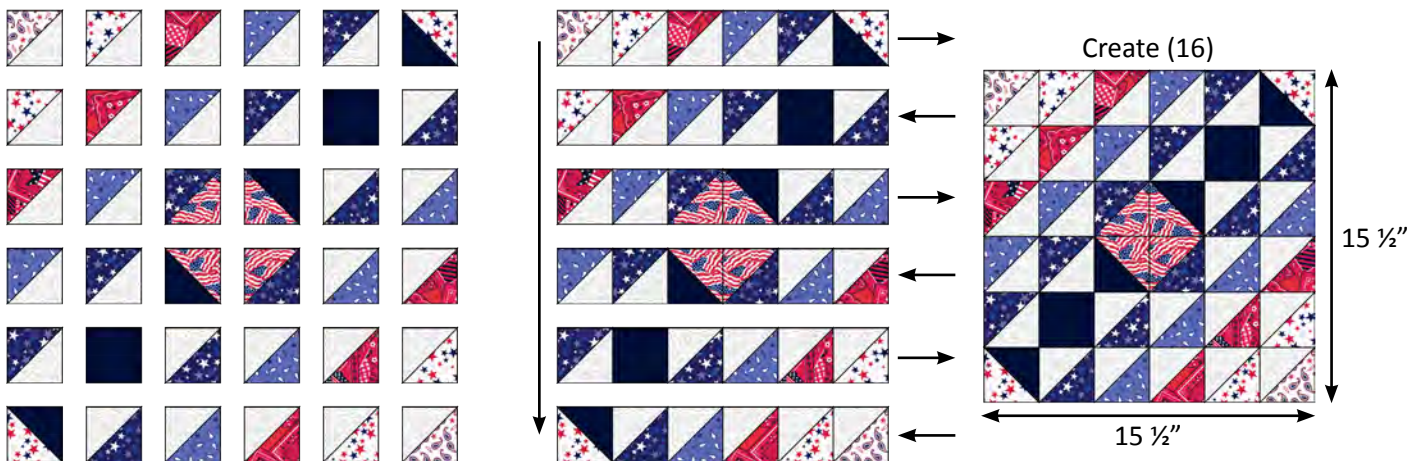
- a. (6) Colorway 1
- b. (2) Colorway 2
- c. (8) Colorway 3
- d. (8) Colorway 4
- e. (4) Colorway 5
- f. (2) Colorway 6
- g. (2) Colorway 7
- h. (2) Colorway 8



7. Arrange the gathered HST units to form a block as shown. Note the rotation of all HST units.

8. Assemble the block in (6) horizontal block rows first. Arrows indicate pressing instructions. Then, sew horizontal block rows together to complete block assembly. The block should measure 15 1/2" x 15 1/2" unfinished.

9. Repeat to create (16) identical blocks.



QUILT ASSEMBLY:

10. Arrange blocks in a 4 x 4 grid, rotating blocks as shown in the diagram. Rotating the blocks will create a diamond like, ombre effect throughout the quilt top.

11. Once you have confirmed that the block rotation is correct, sew the blocks into (4) horizontal block rows. Alternate the direction in which you press the seams in each row.

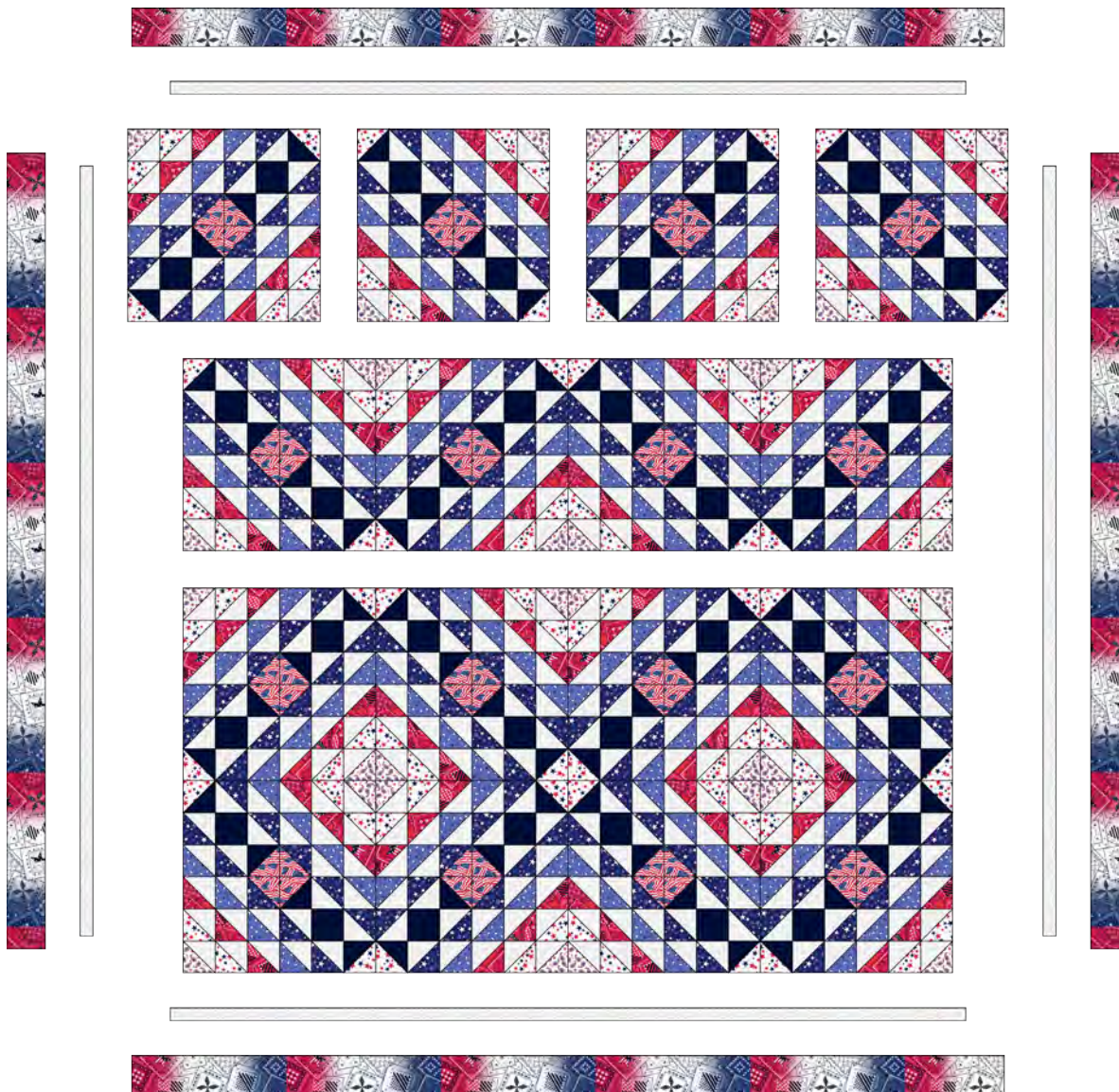
12. Sew horizontal block rows together to complete the quilt top center measuring 60 1/2" x 60 1/2" unfinished.



Sea to Shining Sea

13. Attach (1) $1\frac{1}{2}$ " x $60\frac{1}{2}$ " **Fabric D** Side Inner Border strip to either side of the quilt top center. Press outward after attaching each strip. Then, attach (1) $1\frac{1}{2}$ " x $62\frac{1}{2}$ " **Fabric D** Top/Bottom Inner Border strip to the top and bottom of the quilt top center. The quilt top should measure $62\frac{1}{2}$ " x $62\frac{1}{2}$ " unfinished at this step.

14. Attach (1) $3\frac{1}{2}$ " x $62\frac{1}{2}$ " **Fabric A** Side Outer Border strip to either side of the quilt top center. Press outward after attaching each strip. Then, attach (1) $3\frac{1}{2}$ " x $68\frac{1}{2}$ " **Fabric A** Top/Bottom Outer Border strip to the top and bottom of the quilt top to complete assembly. The completed quilt top should measure $68\frac{1}{2}$ " x $68\frac{1}{2}$ " unfinished.



FINISHING THE QUILT:

- 15.** Sandwich the quilt top with batting and backing. Baste quilt layers together using your preferred method.
- 16.** Quilt as desired.
- 17.** Bind quilt using (8) $2\frac{1}{4}$ " x WOF **Fabric I** strips.