

ADVANCED
SKILL

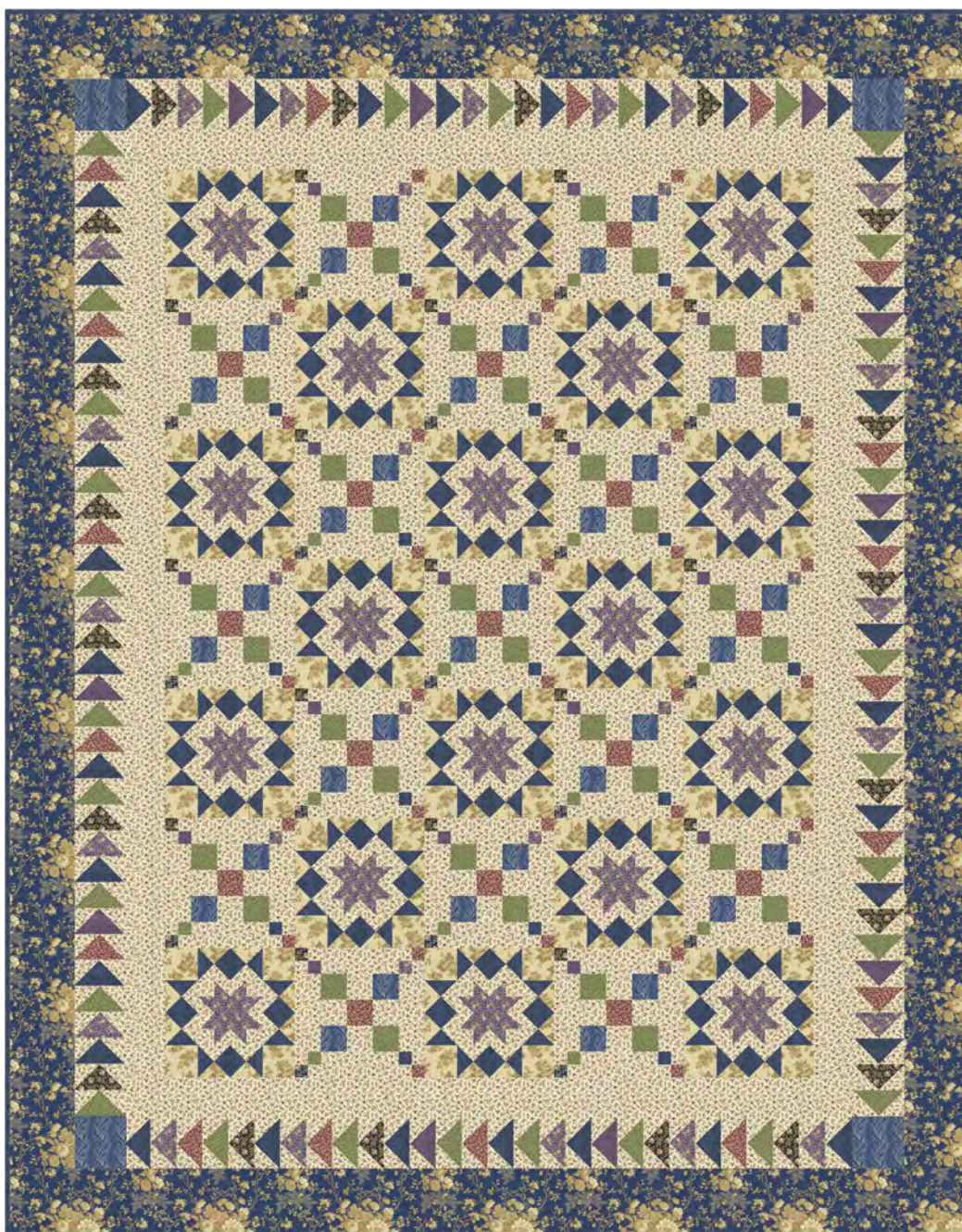
Colonial Court

designed by Char Hopeman

featuring the *Richmond c.1862* collection by Nancy Gere

SIZE: 74-1/2" x 94-1/2"

FREE
PROJECT



THIS IS A DIGITAL REPRESENTATION OF THE QUILT TOP, FABRIC MAY VARY.

PLEASE NOTE: BEFORE MAKING YOUR PROJECT, CHECK FOR ANY PATTERN UPDATES AT WINDHAMFABRICS.COM'S FREE PROJECTS SECTION.



Colonial Court

WOF = Width of Fabric / FQ = Fat Quarter




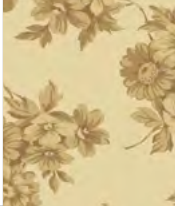
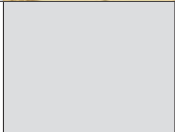
KEY	FABRIC	SKU	YD	CUTTING INSTRUCTIONS
A		51637-3 Navy	1-5/8	(9) 5-1/2" x WOF strips. Sew ends into one long strip using diagonal seams. Subcut into (2) 5-1/2" x 84-1/2" strips and (2) 5-1/2" x 74-1/2" strips.
B		51638-2 Purple	FQ	(3) 1-1/2" x 21" strips; subcut (34) 1-1/2" squares. (3) 2-1/2" x 21" strips; subcut (10) 2-1/2" x 4-1/2" rectangles.
C		51638-3 Navy	2-1/8	(15) 2-1/2" x WOF strips. Set aside (10) strips for Binding. From remaining strips, subcut (34) 2-1/2" x 4-1/2" rectangles. (8) 3-3/4" x WOF strips; subcut (72) 3-3/4" squares.
D		51639-3 Navy	FQ	(5) 2-1/2" x 21" strips; subcut (34) 1-1/2" squares. (1) 4-1/2" x 21" strip; subcut (4) 4-1/2" squares.
E		51640-2 Purple	3/4	(6) 1-3/4" x WOF strips; subcut (132) 1-3/4" squares. Draw a diagonal line on the wrong side of each square. (2) 3" x WOF strips; subcut (18) 3" squares and an additional (12) 1-3/4" squares, drawing a diagonal line on the wrong side of each square. (3) 2-1/2" x WOF strips; subcut (20) 2-1/2" x 4-1/2" rectangles.
F		51640-4 Charcoal	FQ	(3) 1-1/2" x 21" strips; subcut (34) 1-1/2" squares. (5) 2-1/2" x WOF strips; subcut (20) 2-1/2" x 4-1/2" rectangles.
G		51641-3 Navy	Fat 1/8	(3) 1-1/2" x 21" strips; subcut (34) 1-1/2" squares.

PROJECT DISCLAIMER: Every effort has been made to ensure that all projects are error free. All the information is presented in good faith, however, no warranty can be given nor results guaranteed. Therefore, we assume no responsibility nor damages that may occur when referring to this pattern. When errors are brought to our attention, we make every effort to correct and post a revision as soon as possible. We suggest you check windhamfabrics.com for pattern updates and to test the pattern prior to making the project. Test templates first, before cutting all the pieces. Free projects are not for resale.



Colonial Court

WOF = Width of Fabric / FQ = Fat Quarter

KEY	FABRIC	SKU	YD	CUTTING INSTRUCTIONS
H		51641-6 Wine	1/2	(1) 1-1/2" x WOF strip; subcut (17) 1-1/2" squares. (5) 2-1/2" x WOF strips; subcut (17) 2-1/2" squares and (18) 2-1/2" x 4-1/2" rectangles.
I		51641-7 Green	5/8	(1) 1-1/2" x WOF strip; subcut (17) 1-1/2" squares. (7) 2-1/2" x WOF strips; subcut (4) 2-1/2" squares and (30) 2-1/2" x 4-1/2" rectangles.
J		51643-6 Wine	4-3/8	(10) 1-3/4" x WOF strips; subcut (72) 1-3/4" x 3" rectangles and (72) 1-3/4" squares. (4) 3-3/4" x WOF strips; subcut (36) 3-3/4" squares. Draw a diagonal line on the wrong side of each square. (6) 1-1/2" x WOF strips; subcut (136) 1-1/2" squares. (33) 2-1/2" x WOF strips. From (21) strips, subcut (332) 2-1/2" squares, and from the remaining (12) strips, subcut (68) 2-1/2" x 6-1/2" rectangles. (7) 3-1/2" x WOF strips. Using diagonal seams, sew ends together into one long strip. Subcut (2) 3-1/2" x 70-1/2" strips and (2) 3-1/2" x 56-1/2" strips.
K		51644-5 Tan	1	(6) 3" x WOF strips; subcut (72) 3" squares. (4) 3-3/4" x WOF strips; subcut (36) 3-3/4" squares. Draw a diagonal line on the wrong side of each square.
		Backing	5-3/4	Batting 84" x 104"



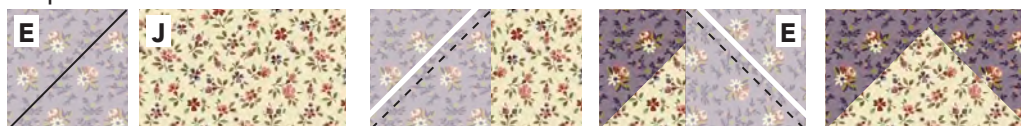
Colonial Court

BLOCK ASSEMBLY

STAR BLOCK

1. **Flying Geese Unit:** Lay (1) **E** 1-3/4" marked square on the end of (1) **J** 1-3/4" x 3" rectangle, right sides together. Stitch together on the drawn line. Trim off the corner leaving a 1/4" seam allowance. Press this seam open. Repeat on the other end of the rectangle. Make (72).
2. Sew (1) **Flying Geese Unit** to the left and right sides of (18) **E** 3" squares, as shown. Make (18).
3. Sew (1) **J** 1-3/4" square to each end of the (36) remaining **Flying Geese Units**, as shown. Press the seams open. Make (36).
4. **Small Purple Star:** Sew (1) **Step 3** unit to the top and bottom edges of (18) **Step 2** units, as shown. Press the seams open. Square to 5-1/2". Make (18).

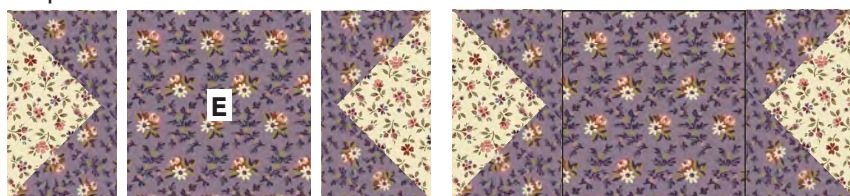
Step 1



Measures 1-3/4" x 3"

Make (72)

Step 2



Make (18)

Measures 3" x 5-1/2"

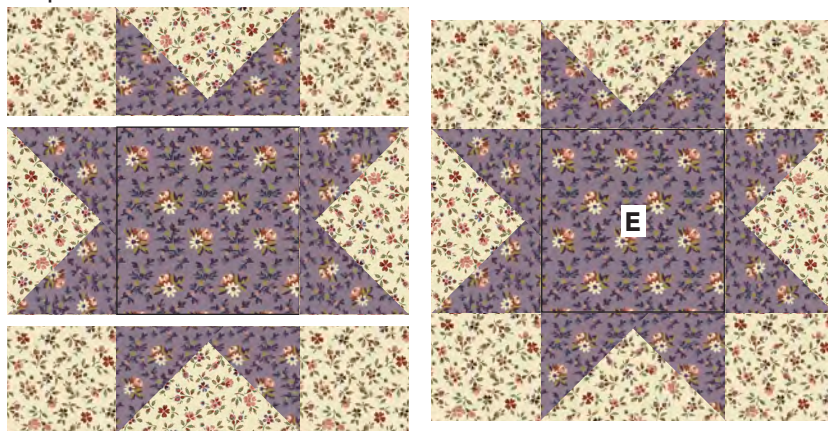
Step 3



Make (36)

Measures 1-3/4" x 5-1/2"

Step 4



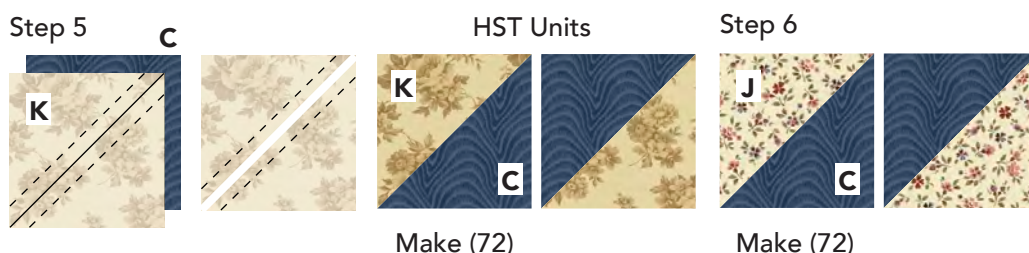
Make (18)

Measures 5-1/2" square.



Colonial Court

- 5. Half Square Triangles:** Lay (36) **K** and **C** 3-3/4" squares right sides together, as shown. Sew 1/4" from both sides of the drawn line. Cut apart on the drawn line to yield (2) Half Square Triangles (HST) Units. Press the seams toward **C**. Make (72).
- 6.** Repeat **Step 5** using (36) EACH **J** and **C** 3-3/4" squares. Make (72) **J/C** HST Units.
- 7. Quarter Square Triangles:** Draw a diagonal line across the wrong side of (72) **K/C** HST units from **Step 5**. Lay (1) marked **K/C** unit on top of (1) **J/C** unit from **Step 6**, right sides together, so that the **C** sides are opposite one another as shown. Sew 1/4" from both sides of the drawn line. Cut apart on the drawn line to yield (2) Quarter Square Triangles (QST) Units. Press the seams open. Square to 3". Make (144).
- 8.** Sew the **QST Units** into (72) pairs, **C** sides together, with **K** and **J** on the same row, as shown. Press the seam open.
- 9.** Sew (36) **QST Unit** pairs to the sides of (18) **Small Purple Stars** (**Step 4**). Note **J** is facing inward. Press the seams open.

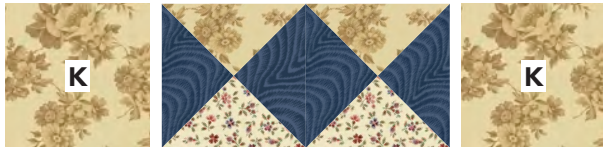




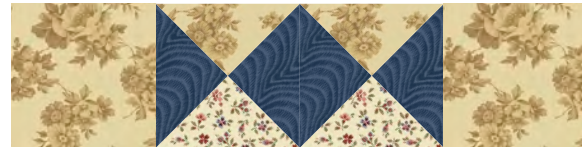
Colonial Court

- 10. Sew (1) **K** 3" square to both ends of the remaining (36) Hourglass Square pairs. Press the seams open.
- 11. Sew these to the top and bottom edges of the units created in Step 9. Press the seams open. Star Blocks measure 10-1/2" square. Make (18).

Step 10

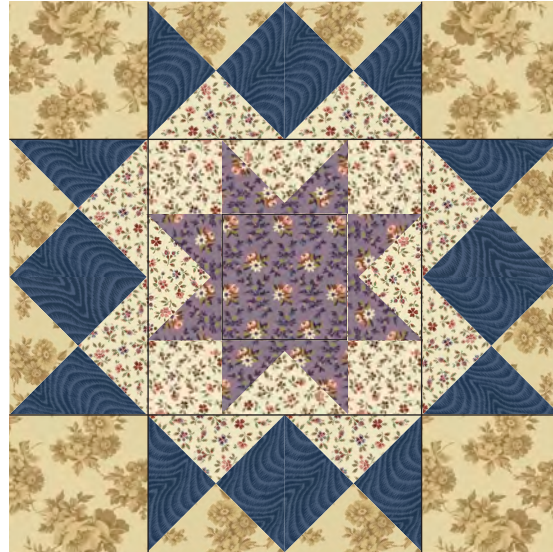


Measures 3" x 10-1/2"



Make (36)

Step 11



Make (18)

Star Block unfinished size: 10-1/2" square.

CHAIN BLOCK

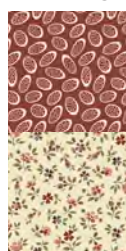
Press all seams toward dark fabric unless otherwise stated.

- 12. Small Rectangle Unit: Sew (1) EACH, **H** and **J** 1-1/2" squares together. Unit measures 1-1/2" x 2-1/2". Make (17).
- 13. Repeat Step 12 using 1-1/2" squares to make (34) EACH **B/J**, **F/J** and **G/J**, and (17) of **I/J** units, as shown.

Step 12



Small Rectangle Unit



Make (17)

Measures 1-1/2" x 2-1/2"

Step 13



Make (34)



Make (34)



Make (34)

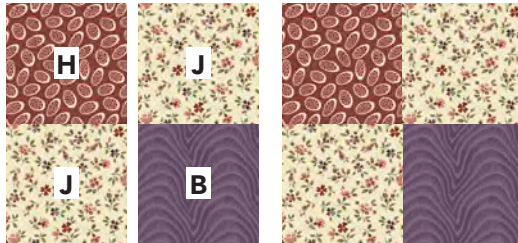


Make (17)

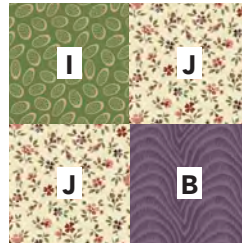


Colonial Court

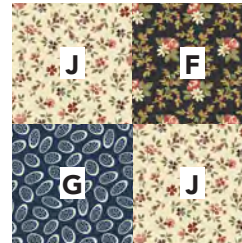
14. 4-Patch Square: Using the fabric combinations and amounts shown, sew together (2) 1-1/2" x 2-1/2" Small Rectangle Units from Steps 12 and 13 as shown, for (17) EACH H/J/B and I/J/B, and (34) G/J/F 4-Patch squares measuring 2-1/2". Press seams open.



Make (17)



Make (17)



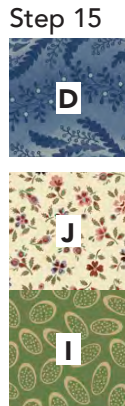
Make (34)

4-Patch Square
Square to 2-1/2".

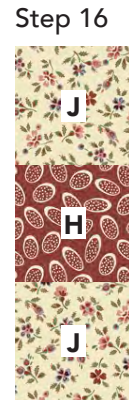
15. Large Rectangle Unit: Sew together (1) EACH D, J, and I 2-1/2" squares. Unit measures 2-1/2" x 6-1/2". Make (34).

16. Repeat Step 15 using (2) J and (1) H 2-1/2" squares to make (1) J/H/J Large Rectangle Unit. Make (17).

17. 9-Patch Square: Sew (2) D/J/I and (1) J/H/J Large Rectangle Units together, as shown. Press seams open. Square to 6-1/2". Make (17) total.

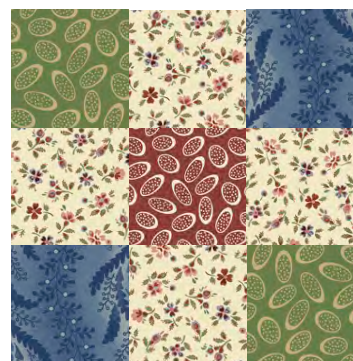
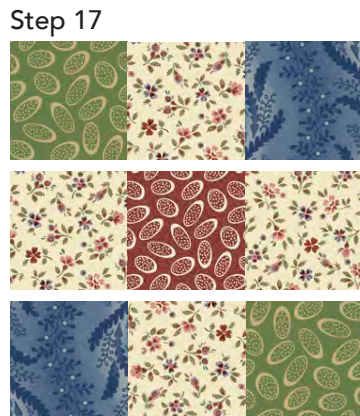


Make (34)



Large Rectangle Unit
Measures 2-1/2" x 6-1/2"

Make (17)



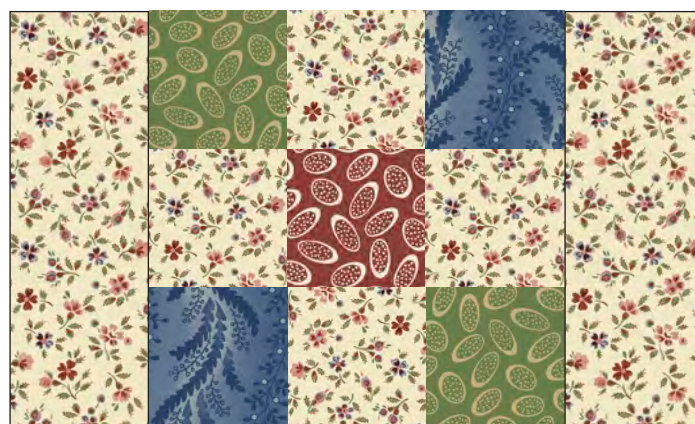
9-Patch Square
Measures 6-1/2" square.

Make (17)



Colonial Court

18. Sew (1) **J** 2-1/2" x 6-1/2" rectangle to EACH side of the (17) 9-Patch Square Units from Step 17. Press the seams toward the rectangles.

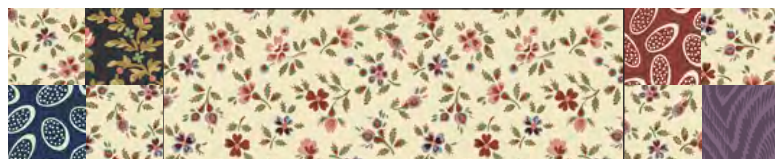


Make (17)
Measures 6-1/2" x 10-1/2"

19. Paying attention to fabric placement and orientation, sew a 4-Patch Square to EACH end of the (34) remaining **J** 2-1/2" x 6-1/2" rectangles, as shown. Press the seams toward the rectangles. Make (34).



Make (17)
Measures 2-1/2" x 10-1/2"

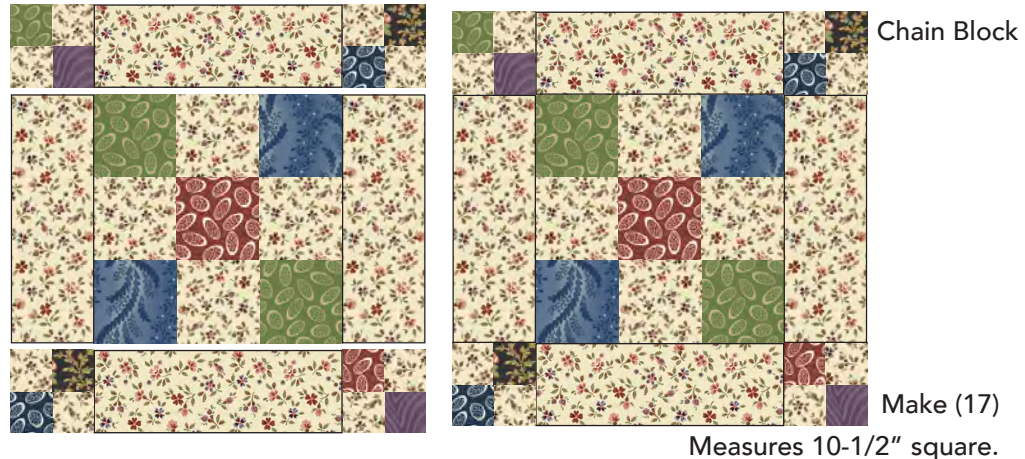


Make (17)
Measures 2-1/2" x 10-1/2"



Colonial Court

20. Sew units from **Step 19** to the top and bottom of the **9-Patch Square Unit** from **Step 18**. Press the seams open to make (1) **Chain Block**. Measures 10-1/2" square. Make (17).



QUILT ASSEMBLY

Refer to Quilt Assembly Diagram for Steps 21-24.

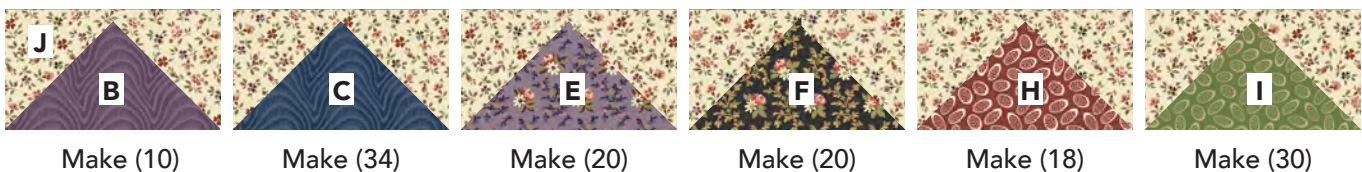
21. Sew the **Star** and **Chain Blocks** into (7) rows of (5) Blocks each, alternating the two different blocks in each row. Press the seams between the blocks in each row, open. Press the seams between the rows, open.

BORDERS

22. **Border 1:** Sew (2) **J** 3-1/2" x 70-1/2" strips to the sides of the quilt top. Press seams toward **J**. Sew (2) **J** 3-1/2" x 56-1/2" strips to the top and bottom edges of the quilt top. Press seams toward **J**.

23. **Border 2:** Draw a diagonal line on the wrong side of (264) **J** 2-1/2" squares. Repeat **Step 1**, using the marked **J** squares with (10) **B**, (34) **C**, (20) **E**, (20) **F**, (18) **H**, and (30) **I** 2-1/2" x 4-1/2" rectangles to make a total of (132) Flying Geese Units, as shown.

Flying Geese Units



Please refer to the diagrams on Page 10 for fabric placement while making the following border strips.

23A. **Side Border Strips:** Sew together (38) Flying Geese Units into (1) **Side Border Strip - Right** and (1) **Side Border Strip - Left**, as shown. Strip measures 4-1/2" x 76-1/2". Press seams open. Paying attention to the placement of the strips and the direction of the **Flying Geese**, sew strips to the sides of the quilt center; press towards **Border 1**.

23B. **Top/Bottom Border Strips:** Sew together (28) Flying Geese Units into (1) **Top Border Strip**, (1) **Bottom Border Strip**, and (1) **D** 4-1/2" square to EACH end, as shown. Strips measure 4-1/2" x 64-1/2". Press seams open. Paying attention to the placement of the strips and the direction of the **Flying Geese**, sew strips to the top and bottom edges of the quilt top. Press toward **Border 1**.



Colonial Court

Step 23A

Side Border Strip - Right



Side Border Strip - Left



Step 23B

Top Border Strip



Bottom Border Strip



- 24. Border 3:** Sew (2) **A** 5-1/2" x 84-1/2" strips to the sides of the quilt top. Press the seams toward **A**. Sew (2) **A** 5-1/2" x 74-1/2" strips to the top and bottom of the quilt top. Press the seams toward **A**.

FINISHING

- 25.** Piece the backing fabric lengthwise. Remove any selvages from the seam allowances. Press the seams open.

- 26.** Layer quilt top, batting and backing together to form quilt sandwich. Baste and quilt as desired. Bind using **C** 2-1/2" strips.



Colonial Court

Quilt Assembly Diagram

