

## Flora - 78" x 78"

WindhamFabrics.com



	54046-1 Cobalt	1/2		54049-11 Red	1/3
	54046-2 Green	1/2		54050-13 Dark Magenta	3/4
	54046-3 Pink	1/4		54050-4 Blue	3/4
	54047-2 Green	1/2		54050-6 Yellow	7/8
	54047-4 Blue	1/2		54051-10 Hot Pink	1/8
	54047-5 Magenta	7/8		54051-13 Purple	1/4
	54047-6 Yellow	3/4		54051-14 Orange	1/8
	54048-7 Petal	2/3		54051-15 Jade	3/8
	54048-8 Cornflower	1/2		54051-9 Dark Teal	1/8
	54048-9 Dark Teal	1/4		37098-79 Royal Blue	3-3/4
	54049-1 Cobalt	7/8		37098-78 This Green	1-1/2
	54049-10 Hot Pink	1-1/3			
INCLUDES BINDING					

TOTAL ESTIMATED YARDAGE: 16-1/2

108" Wide Backing - 2 1/2 Yards

Kit includes pattern, fabric for top & binding. No backing.  
Fat Robin 16-Point Book/Ruler Combo not included.

To purchase the Book/Ruler Combo, please contact Robin: [RobinRuthDesign@gmail.com](mailto:RobinRuthDesign@gmail.com)



## Penny - 55" x 74"

KitchenTableQuilting.com

Fat Quarter Each Print:

	54047-2 Green		54049-11 Red
	54047-6 Yellow		54050-4 Blue
	54048-8 Cornflower		54050-6 Yellow
	54049-1 Cobalt		54051-10 Hot Pink
	54049-9 Dark Teal		54051-13 Purple
	54049-10 Hot Pink		54051-14 Orange
	37098-70 Cactus Rose		37098-78 This Green
PALETTE		PALETTE	

1/3 Yard Each Print

	54046-1 Cobalt		54048-7 Petal
	54046-2 Green		54051-9 Dark Teal
	54046-3 Pink		54051-15 Jade
	54047-4 Blue		54050-13 Dark Magenta
	37098-56 Cloud		54047-5 Magenta
	1-3/4		1/2

TOTAL ESTIMATED YARDAGE: n/a

BACKING: 3-1/2 Yards



## Random Patchwork - 48" x 60"

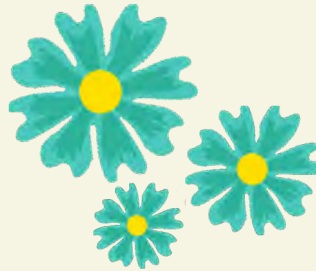
SewFunByMonique.com

5/8 Yards of Each:

	54046-1 Cobalt		54049-10 Hot Pink
	54046-2 Green		54049-11 Red
	54046-3 Pink		54050-4 Blue
	54047-2 Green		54050-6 Yellow
	54047-4 Blue		54050-13 Dark Magenta
	54047-5 Magenta		54051-9 Dark Teal
	54047-6 Yellow		54051-10 Hot Pink
	54048-7 Petal		54051-13 Purple
	54048-8 Cornflower		54051-14 Orange
	54049-9 Dark Teal		54051-15 Jade
	54049-1 Cobalt	1/2	Scrappy Binding

TOTAL ESTIMATED YARDAGE: 13-1/8

BACKING: 3-7/8 Yards



## Glow Pop - 58" x 71"

SewingCorals.com

	FATQWEST-X West Palm Beach	
--	-------------------------------	--

Palette:

	37098-64 Indigo	2-1/4
	37098-79 Royal Blue	2

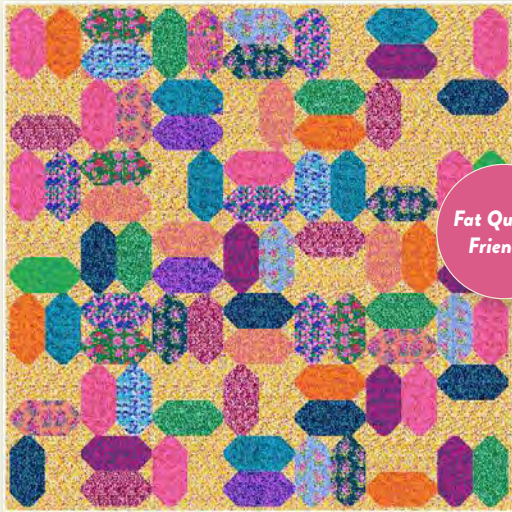
TOTAL ESTIMATED YARDAGE: 9-1/2

BACKING: 4-3/8 Yards



Fat Quarter  
Friendly!





**Fat Quarter Friendly!**

### Wild Folk - 70" x 70"

HappyHippieStudio.com

	<p>FATQWEST-X West Palm Beach</p>	
	<p>54050-6 Yellow</p>	<p>1-3/4</p>

TOTAL ESTIMATED YARDAGE: 7-1/2

BACKING: 2-1/4 Yards 108" Wide Backing or 4-1/4 Yards

### Fat Eighth Friendly!



### Celtic Crossing - 46" x 46"

LoAndBeholdStitchery.com

Fat Eighth of Each Print:			
	54046-3 Pink		54050-4 Blue
	54047-2 Green		54050-6 Yellow
	54047-5 Magenta		54051-9 Dark Teal
	54047-6 Yellow		54051-15 Jade
	54048-7 Petal	1/2 + Fat Eighth:	
	54048-8 Cornflower		54051-10 Hot Pink
	54049-1 Cobalt	1 yard:	
	54049-11 Red		37098-79 Royal Blue PALETTE

TOTAL ESTIMATED YARDAGE: 3-1/8

BACKING: 3 Yards

### Boxed Up - 58" x 70"

CluckCluckSew.com

Fat Quarter of Each Print:			
	54046-1 Cobalt		54050-6 Yellow
	54046-3 Pink		54051-10 Hot Pink
	54047-5 Magenta		54051-13 Purple
	54047-6 Yellow		54051-14 Orange
	54048-8 Cornflower		
Fat Quarter + 1/2 Yard		2-1/2 Yards	
	54050-13 Dark Magenta INCLUDES BINDING		37098-56 Cloud PALETTE

TOTAL ESTIMATED YARDAGE: 5-1/2

BACKING: 3-3/4 Yards



**Fat Quarter Friendly!**

