

Simply Jane

Designed by Whistler Studios

Featuring The Dear Jane II Collection by Brenda Papadakis

Size: 49 1/2" x 61 1/2"



WINDHAM FABRICS

812 Jersey Ave ~ Jersey City, NJ 07310 ~ 201.659.0444 ~ FAX: 201.659.9719
www.windhamfabrics.com email: retail@windhamfabrics.com

Simply Jane

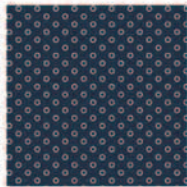
Designed by Whistler Studios
Featuring The Dear Jane II Collection by Brenda Papadakis
Size: 49 1/2" x 61 1/2"

Fabric Requirements

32708-X = 1 5/8 yards
32709-X Multi = 1 2/3 yards
32720-3 Brown = 1 fat quarter
32715-1 Blue = 1/2 yard (for binding)



32720-3



32715-1



32708-X



32709-X

Cutting Instructions:

Inner Panel - 32709-X

Cut panel with 1/2" of cream setting fabric on all 4 sides. 1/4" of that will be used for seam allowance, the other will give a 1/4" cream strip between blocks and where the border fabric is joined to the panel. Fabric panel will be 11 blocks wide by 13 blocks in length.

Border - 32708-X

Cut (2) border strips with 12 patterned triangles for the width. Be sure to add a 1/4" seam allowance on each end of border strip and 1/4" seam allowance at bottom edge of border on opposite side from scalloped edge.

Cut (2) strips with 14 patterned triangles for the length. Be sure to add a 1/4" seam allowance on each end of border strip and 1/4" seam allowance at bottom edge of border on opposite side from scalloped edge. See diagram A

1/4" seam allowance ----->

1/4" seam allowance ----->

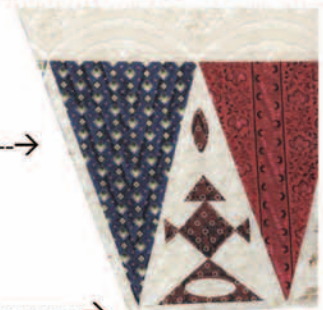


Diagram A

On outside edge of border leave enough to cut out scalloped edge (but wait to cut scallops until after you have quilted the backing and fill together with the top)



WINDHAM FABRICS

Simply Jane

Page 2

Corner Blocks - 32720-3

Cut (4) corner blocks using template on next page. *Note: The corners may be slightly off on 2 corners as it is difficult to get the points to line up as perfectly as they will on the starting corners because the block size from horizontal direction and vertical are slightly different.*

Once the top has been quilted the small 'pleat' that may occur will not be as visible.

See where red circle shows corner mentioned above in Diagram B

Cut (4) pieced triangles sections from the left over border strips on 32708-X to appliqué onto the corner block.

If you are going to appliqué using turned edges you must remember to add 1/4" seam allowance on all sides.



Diagram B

Best to appliqué once corner block has been attached to border to be sure to get it centered.

Assembly

1. Join the border to the top and bottom of the block panel. Join corner block to each end.

2. Join the border to the sides. Join the corner block to the side border.

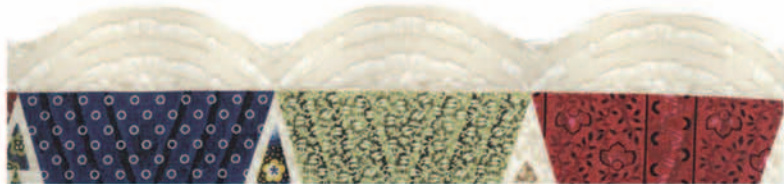
Note: Match the pointed end first and sew towards scallop end - depending on how you cut the ends of the border scallops you may have more or less fabric at top. If you have fabric that sticks out longer / shorter than the top scallop on border you can later lay the template on fabric and trace the top edge shape again to follow the scallop from each side of border.

3. Take appliqué triangle piece and place in center of the corner block. Appliqué using your favorite method. *Note: you will not have enough designs to match all 4 borders in leftover fabric so match opposite corners using 2 of the appliqué patterns of your choice.*

Finishing

Join top, batting and backing and quilt together. Cut scalloped edge. *Note: It is easier to bind if you did not cut each scallop to a point as printed but rounded off the space between each scallop as shown in Diagram C.*

Diagram C



Binding - 32715-1

Cut 2 1/4" strips of binding on bias and sew together as needed. Bias will make it easier to sew on curves when attaching binding.

ENJOY!

Be sure to visit www.windhamfabrics.com to see the complete collection and to download this and other Free Projects

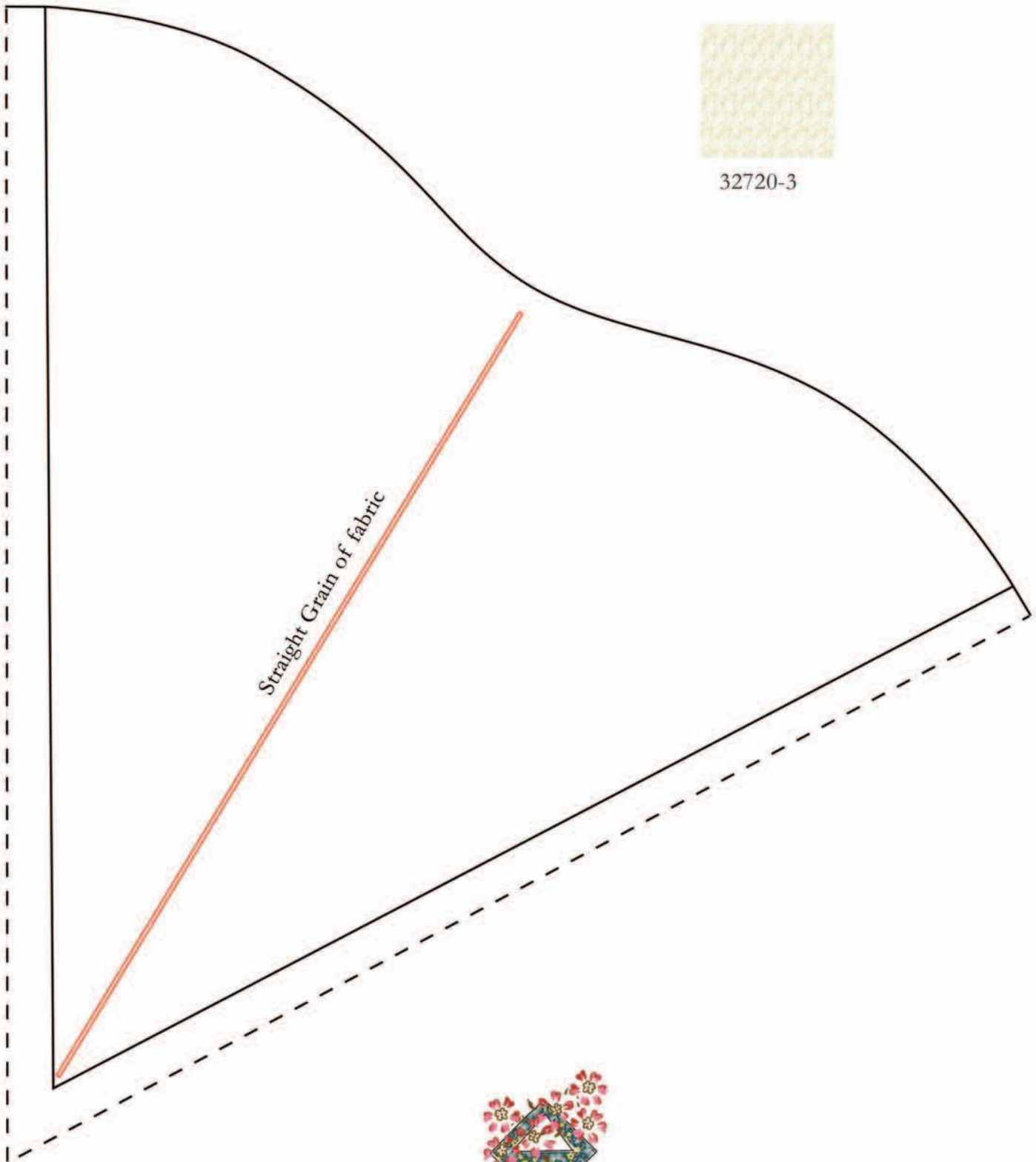


WINDHAM FABRICS

Simply Jane

Page 3

TEMPLATE FOR CORNER BLOCK



32720-3



WINDHAM *W* FABRICS