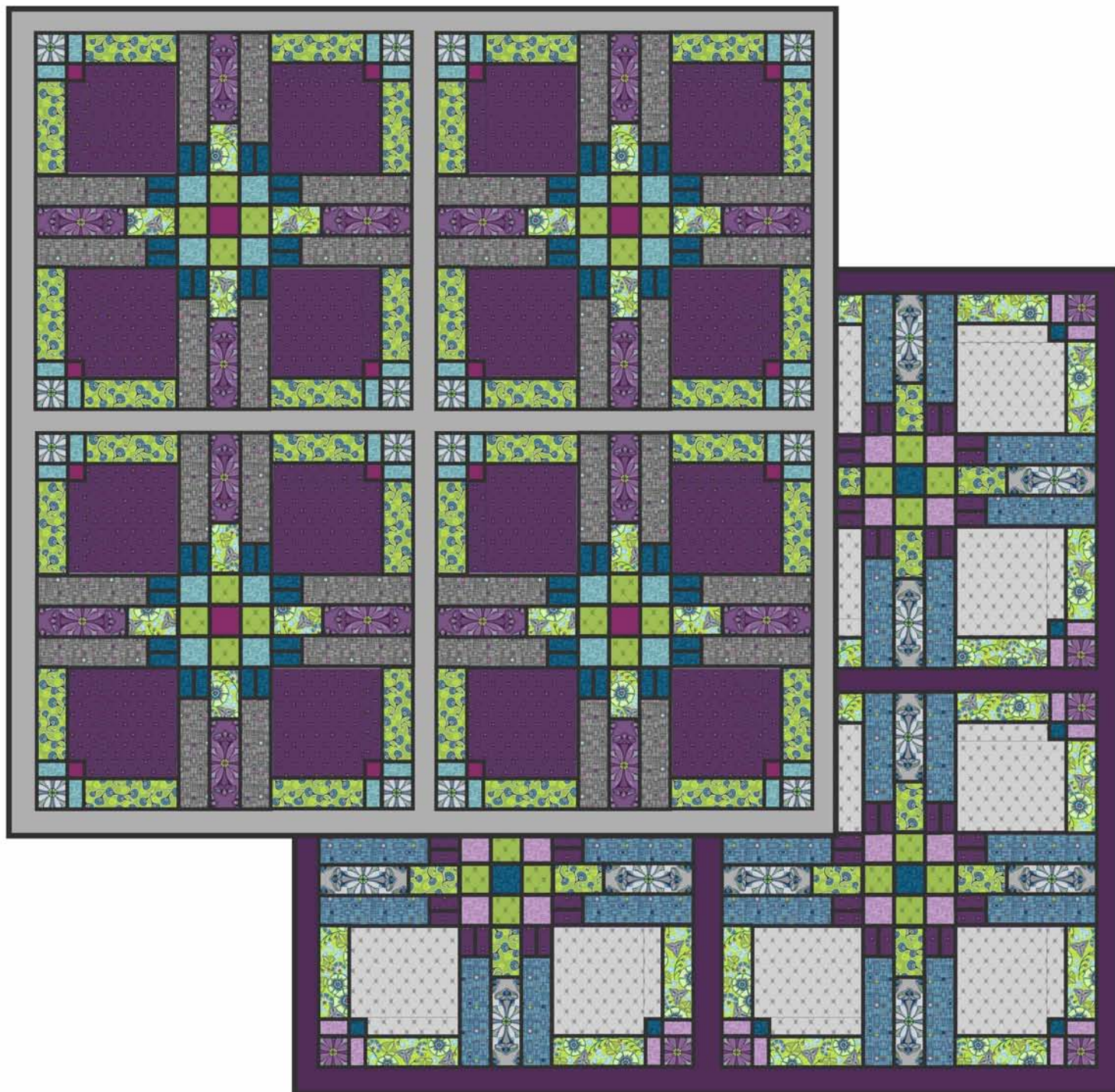


PRAIRIE GLASS SQUARED

BY Jessica Levitt

Featuring fabrics from Kingdom by Jessica Levitt for Windham Fabrics
Finished Size = 57" X 57"



Feel free to download additional copies of this and other projects by visiting
our website: www.windhamfabrics.com

WINDHAM FABRICS

812 Jersey Ave ~ Jersey City, NJ 07310 ~ 201.659.0444 ~ FAX: 201.659.9719
www.windhamfabrics.com email: retail@windhamfabrics.com

PRAIRIE GLASS SQUARED

BY Jessica Levitt

Featuring fabrics from Kingdom by Jessica Levitt for Windham Fabrics
Finished Size = 57" X 57"

Dark Version:

Tuffet in Deep Amethyst (33212-1) = 1 1/8 yd
Tuffet in Peridot (33212-2) = 1/8 yd
Posy in Peridot (33209-2) = 1/2 yd
Tapestry in Deep Amethyst (33208-1) = 5/8 yd
(enough to fussy cut the pieces)
Tapestry in Pewter (33208-3) = 3/8 yd
(enough to fussy cut the pieces)
Castle Wall in Pewter (33211-3) = 5/8 yd
Moat in Aquamarine (33213-4) = 1/4 yd
Moat in Topaz (33213-5) = 1/4 yd
Garden Gems in Peridot (33207-2) = 1/4 yard
Magenta solid = 1/8 yd



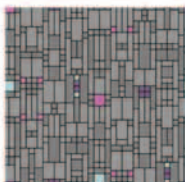
33208-1



33208-3



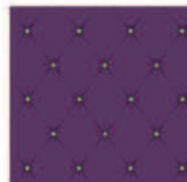
33207-1



33211-3



33209-2



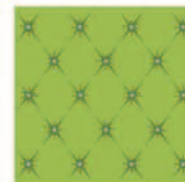
33212-1



33213-5



33213-4



33212-2

Light Version:

Tuffet in Opal (33212-3) = 1 1/8 yd
Tuffet in Peridot (33212-2) = 1/8 yd
Garden Gems in Peridot (33207-2) = 1/2 yd
Tapestry in Pewter (33208-3) = 5/8 yd
(enough to fussy cut the pieces)
Tapestry in Deep Amethyst (33208-1) = 3/8 yd
(enough to fussy cut the pieces)
Castle Wall in Topaz (33211-4) = 5/8 yd
Moat in Amethyst (33213-1) = 1/4 yd
Tuffet in Deep Amethyst (33212-1) = 1/4 yd
Posy in Peridot (33209-2) = 1/4 yard
Moat in Topaz (33213-5) = 1/8 yard



33208-3



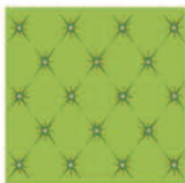
33209-2



33208-1



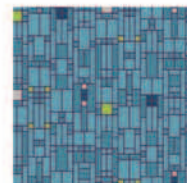
33212-3



33212-2



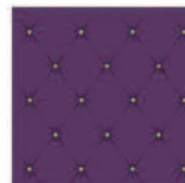
33207-2



33211-4



33213-1



33212-1



33213-5

Both Versions:

Dark grey solid = 1 1/4 yd (thin outlines)
Medium grey or purple solid = 5/8 yd (sashing/border)
Backing = 3 1/4 yd
Binding = 1/2 yard straight grain, 3/4 bias



WINDHAM FABRICS

PRAIRIE GLASS SQUARED

BY Jessica Levitt

Page 2

Cutting:

Fabrics for cutting are shown for the dark version with the light version fabrics in parenthesis.

Tuffet in Deep Amethyst (Tuffet in Opal):*

Cut 8 rectangles 8" X 6 3/4" [A]

Cut 8 rectangles 6 3/4" X 1 3/4" [B]

Cut 8 rectangles 6 3/4" X 8" [C]

Cut 8 rectangles 1 3/4" X 6 3/4" [D]

**Tuffet is a directional print, so these rectangles need to be cut using the first dimension as the width (across the width of the fabric) and the second as the length. You may also choose to fussy-cut so the pattern lines up when pieced.*

Tuffet in Peridot (same):

Cut 1 strip 2 1/4" X WOF

Crosscut that strip into 16 squares 2 1/4" X 2 1/4" [E]

Posy in Peridot (Garden Gems in Peridot):

Cut 7 strips 2 1/4" X WOF

Crosscut these strips into 32 rectangles 6 3/4" X 2 1/4" [F]

Tapestry in Deep Amethyst (Tapestry in Pewter):

Cut 16 rectangles 6 1/2" X 2 1/4" [G]**

***I chose to fussy-cut these pieces around the center of the motif. Since the rectangle is larger than the repeat, this requires you to skip every other motif, and uses more fabric, but the symmetry looks great.*

Tapestry in Pewter (Tapestry in Deep Amethyst):

Cut 16 squares 2 1/4" X 2 1/4" [H]***

**** fussy-cut these squares around the center of the motif*

Castle Wall in Pewter (Castle Wall in Topaz):

Cut 2 strips 8" X WOF

Crosscut these strips into 32 rectangles 2 1/4" X 8" [I]

Moat in Aquamarine (Moat in Amethyst):

Cut 3 strips 2 1/4" X WOF

Crosscut 1 of these strips into 16 squares 2 1/4" X 2 1/4" [J]

Crosscut 2 of these strips into 32 rectangles 1 1/2" X 2 1/4" [K]

Moat in Topaz (Tuffet in Deep Amethyst):

Cut 4 strips 1 1/4" X WOF

Crosscut these strips into 64 rectangles 2 1/4" X 1 1/4" [L]

Garden Gems in Peridot (Posy in Peridot):

Cut 2 strips 2 1/4" X WOF

Crosscut these strips into 16 rectangles 3 3/4" X 2 1/4" [M]

Magenta solid (Moat in Topaz):

Cut 4 squares 2 1/4" X 2 1/4" [N]

Cut 16 squares 1 1/2" X 1 1/2" [O]

Dark grey solid:

Cut 57 strips 3/4" X WOF [GREY]

Set the strips aside for later

Sashing/border solid:

Cut 9 strips 2 1/4" X WOF [SASH]

Set the strips aside for later



WINDHAM FABRICS

PRAIRIE GLASS SQUARED

BY Jessica Levitt

Page 3

Construction:

All seams are scant 1/4".

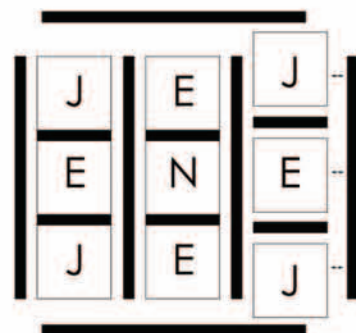
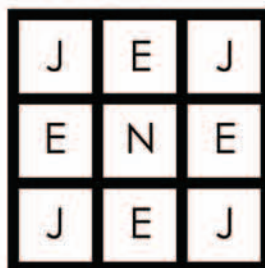
Block Construction:

Sew the block in sections. Each of the 4 blocks needs 1 section 1, 4 section 2s, and 4 section 3s (2 with A/B, and 2 with C/D)

Section 1 (make 4 total):

1. Sew the squares together in columns with GREY separating each square. Throughout the quilt, I chose to not cut the GREY to length until after it is sewn on, then I trim it to match the adjoining pieces.
2. Sew the 3 columns: J-GREY-E-GREY-J, E-GREY-N-GREY-E, and J-GREY-E-GREY-J
3. Sew the columns together with GREY in between each one.
4. Add GREY to the outside edges.

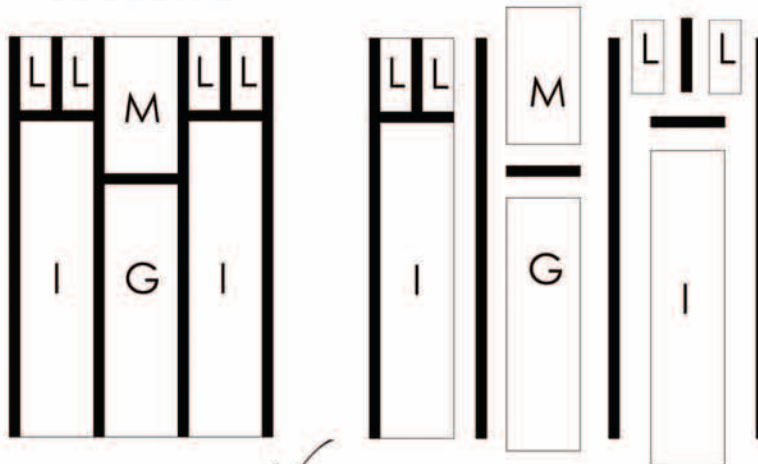
Section 1



Section 2 (make 16 total):

1. Sew L-GREY-L along the 2 1/4" edges twice.
2. Then sew 2 columns: L unit-GREY-I.
3. Sew 1 column: M-GREY-G (along the 2 1/4" edges).
4. Sew the 3 columns together with GREY in between each one.
5. Add GREY to the left and right edges only (see diagram).

Section 2



WINDHAM FABRICS

PRAIRIE GLASS SQUARED

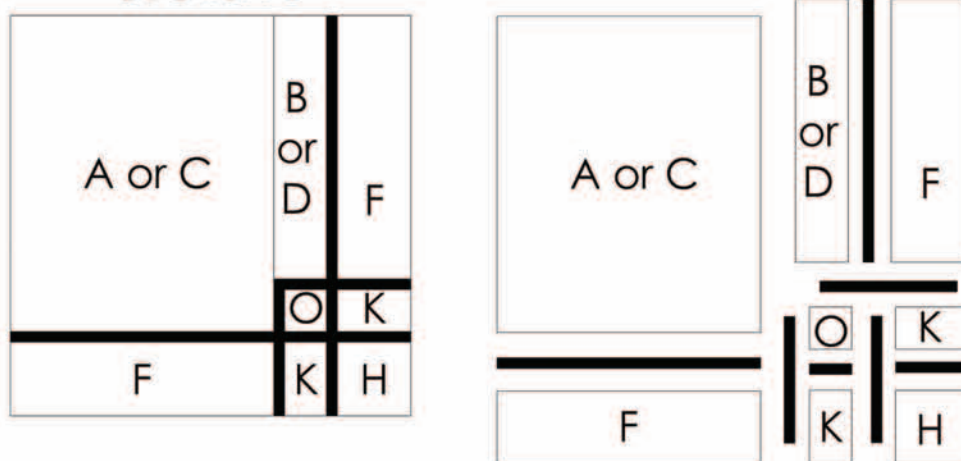
BY Jessica Levitt

Page 4

Section 3 (make 16 total):

1. When sewing these sections together, use A and B in the same section, or C and D in the same section. If you do this, when rotated in the final quilt these fabrics will all go in the same direction.
2. Start the corner unit by sewing O-GREY-K (along the 1 1/2" edges) and K-GREY-H (Along the 2 1/4" edges).
3. Sew these pieced units together with a GREY strip in the center and a GREY strip on the left (see diagram).
4. Sew a B or D to GREY then F (along the 6 3/4" edges).
5. Sew the right column to be: B/D unit-GREY-corner unit.
6. Sew the left column to be: A or C-GREY-F (along the 6 3/4" edges).
7. Sew the two columns together with NO GREY in between.

Section 3



Complete the blocks:

1. Use the Block Diagram as a guide and sew the sections into blocks (next page). Make 3 rows.
You do not need to add any sashing as they grey has already been pieced on the sections. (See diagram for orientation.)
 - Row 1: section 3 (C/D), section 2, section 3 (A/B)
 - Row 2: section 2, section 1, section 2
 - Row 3: section 3 (A/B), section 2, section 3 (C/D)
2. Sew the three rows together as shown.
3. Add a final border of the GREY to the outside edges.

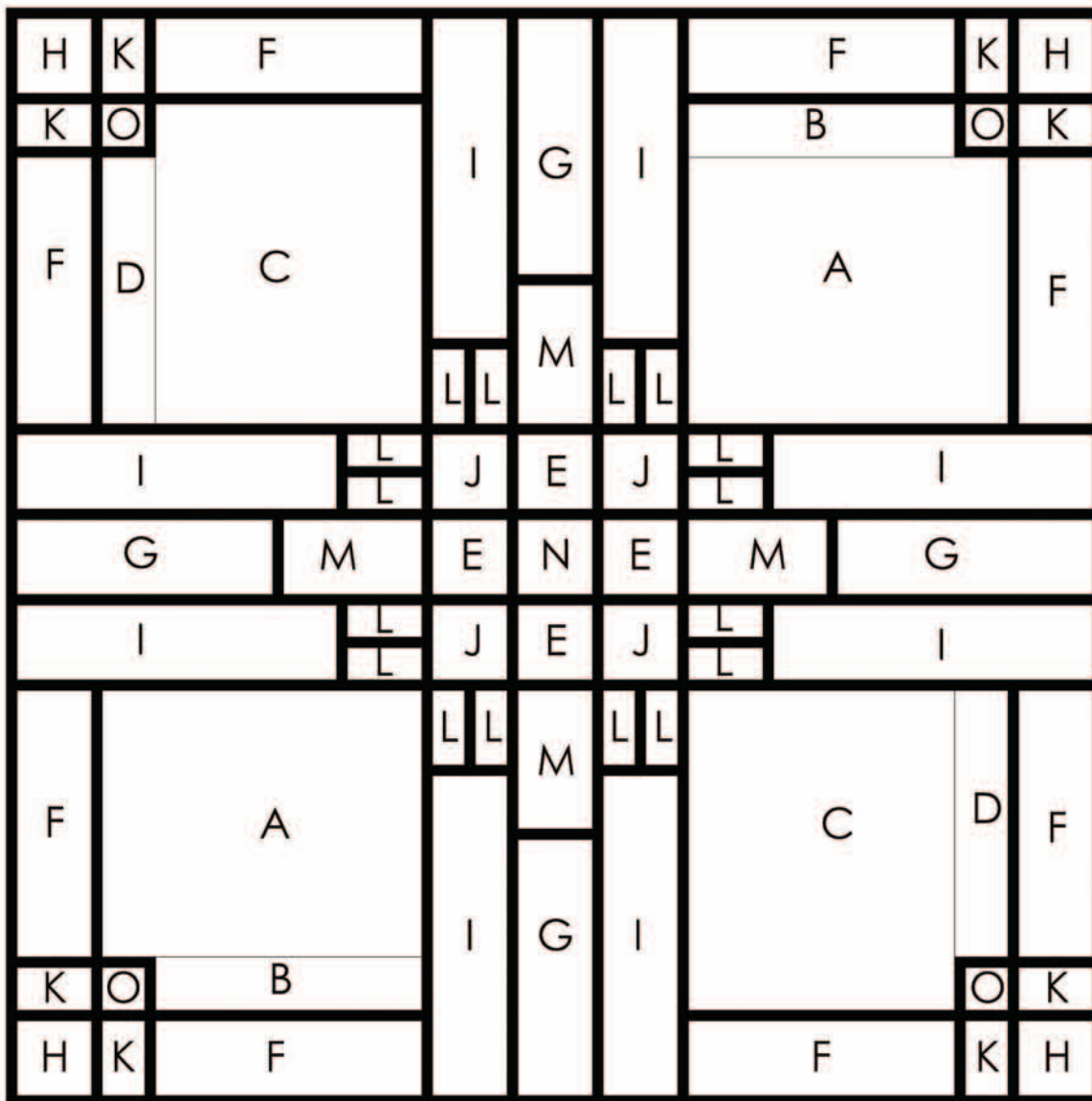


PRAIRIE GLASS SQUARED

BY Jessica Levitt

Page 5

Block Diagram



Complete the quilt:

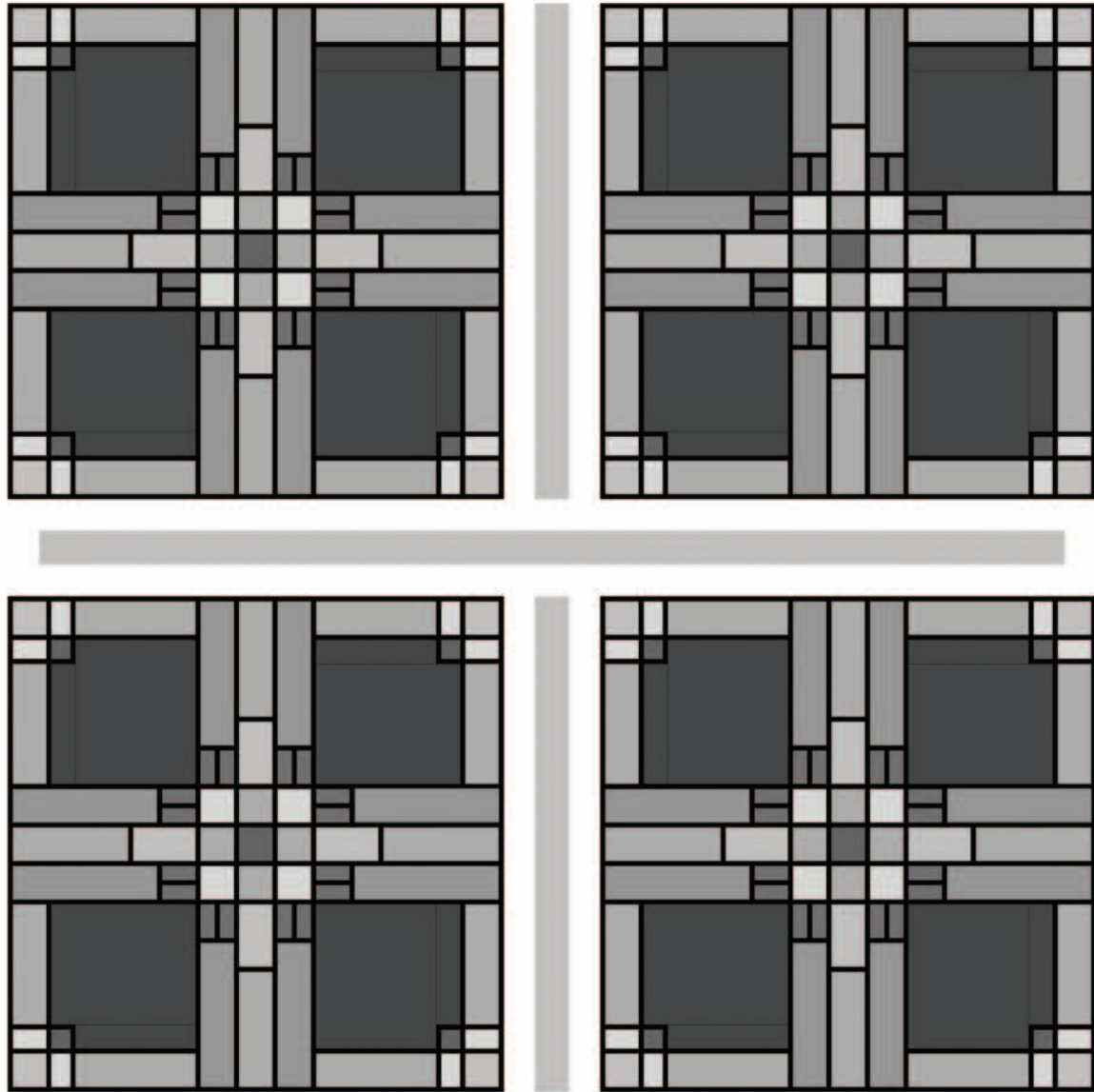
1. Sew the blocks together as shown in the assembly diagram with the 2 1/4" strips of SASH in between as sashing. Also add these strips to the outside edge as a border. You will have to piece some of these strips together at their short edges to get long enough strips.
2. The yardage for the backing allows you to simply cut the length in two and sew together along the long edges.
3. Layer, baste, quilt, bind and enjoy!

PRAIRIE GLASS SQUARED

BY Jessica Levitt

Page 6

Assembly Diagram



Follow Jessica Levitt on her blog:
www.juicy-bits.typepad.com

Always look on our website before starting your project to see
if there are any updates or corrections

Be sure to visit www.windhamfabrics.com to see the complete collection
and to download this and other Free Projects

WINDHAM FABRICS

