

Cityscape

Designed by LB Krueger
Featuring the Downtown Collection by LB Krueger
Size: 60" x 70"



Check www.windhamfabrics.com Free Project section to see if there are any pattern updates before you start your quilt project

WINDHAM *W* **FABRICS**

812 Jersey Ave ~ Jersey City, NJ 07310 ~ 201.659.0444 ~ FAX: 201.659.9719
www.windhamfabrics.com email: retail@windhamfabrics.com

Cityscape

Designed by LB Krueger
Featuring the Downtown Collection by LB Krueger
Size: 60" x 70"



37079-X



37081-X



37082-2



37082-3



37082-4



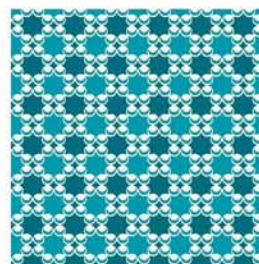
37082-7



37083-2



37083-5



37085-9



35370-2

Fabric Requirements:

4 yards 35362-7 Linen White Solid

3/4 yard 37082-2 Grey

7/8 yard 37082-3 Black

2/3 yard 37082-4 Green

1 yard 37079-2 Grey

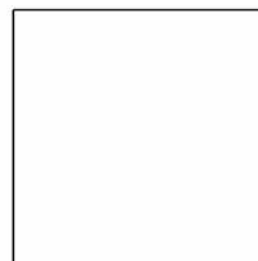
1 Fat Quarter

37082-7 Yellow, 37085-9 Teal, 37083-5 Purple

35370-2 Black Solid

5/8 yard 37081-X Multi for binding

4 yards backing



35362-7

The quilt is built in 4 sections. To keep pieces straight cut pieces and keep them in them together by section.

Note: All Seam allowances are 1/4"

Cutting:

Section 1

35362-7 Linen White

Cut (1) 2.5" x 20.5" / (1) 8.5" x 8.5" / (1) 6.5" x 2.5" / (1) 6.5" x 8.5" / (1) 2.5" x 6.5" / (1) 8.5" x 6.5" / (5) 6.5" x 6.5" / (1) 38.5" x 20.5"

Section 2

35362-7 Linen White

Cut (1) 34.5" x 10.5" / (1) 34.5" x 8.5" / (2) 3" x 11" / (1) 2.5" x 18.5"

Section 3

35362-7 Linen White

Cut (1) 16.5" x 26.5" / (1) 6.5" x 8.5" / Cut (2) 2.5" x Width of Fabric (WOF). Join together and subcut to (1) 2.5" x 50.5". Save leftover strip.

Section 4

35362-7 Linen White

Cut (1) 32.5" x 4.5" / (1) 6.5" x 10.5" / (1) 4.5" x 16.5" / (1) 2.5" x 6.5" / (1) 8.5" x 6.5"

Left Side Piece

35362-7 Linen White

Cut (1) 2.5" x (WOF). Join together with leftover strip from Section 3 and subcut to (1) 2.5" x 50.5".

Section 1

37082-7 Yellow

Cut (1) 6.5" x 6.5" for center square

Cut (2) 6.5" x 6.5" for large triangle B

Cut (2) 5.5" x 5.5" for small triangle A

Section 2

37079-X Grey

Cut (1) 4.5" x 8.5"

Cut (1) 4.5" x 10.5"

Section 3

37082-2 Grey

Cut (1) 8.5" x 24.5" / (1) 2.5" x 8.5"

37083-5 Purple

Cut (1) 8.5" x 16.5"

Section 4

37083-2 Grey

Cut (1) 10.5" x 18.5"

37082-3 Black

Cut (1) 4.5" x 10.5" / (1) 6.5" x 28.5" / (1) 2.5" x 16.5"

37085-9 Teal

Cut (1) 8.5" x 12.5"

37082-4 Green

Cut (1) 2.5" x 10.5" / (1) 8.5" x 22.5" / (1) 2.5" x 22.5"

37079-X Grey

Cut (1) 2.5" x 10.5" / (1) 6.5" x 32.5"

Windows

37370-2 Black

Cut (34) 2" x 2" squares / (4) 2" x 4" rectangles*

***Note:** No seam allowance is included so if you prefer to turn under edges when you applique, please add 1/4" allowance.

Cutting and Assembly:

Note: Light grey = wrong side of fabric



Section 1

The Sun Points

1. From your yellow sun fabric, take (2) 6.5" squares (for large triangle B) and (2) 5.5" squares (for small triangle A) and cut in half diagonally to form 4 triangles in each size. With right sides together, take (1) 6.5" x 6.5" white square and pin the large triangle B to it. Diagram A
2. Stitch 1/4" seam and cut away excess fabric from white square. Fold back and press. Diagram B

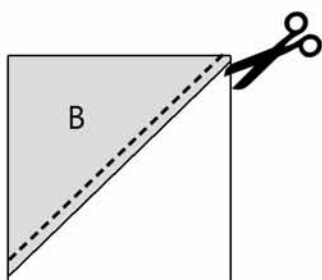


Diagram A

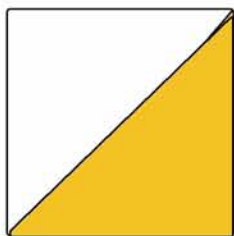


Diagram B

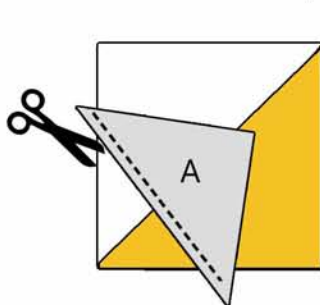


Diagram C

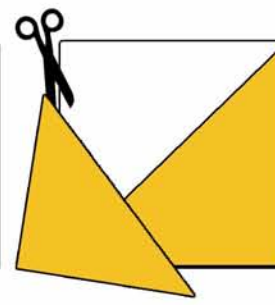


Diagram D

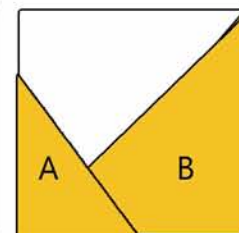
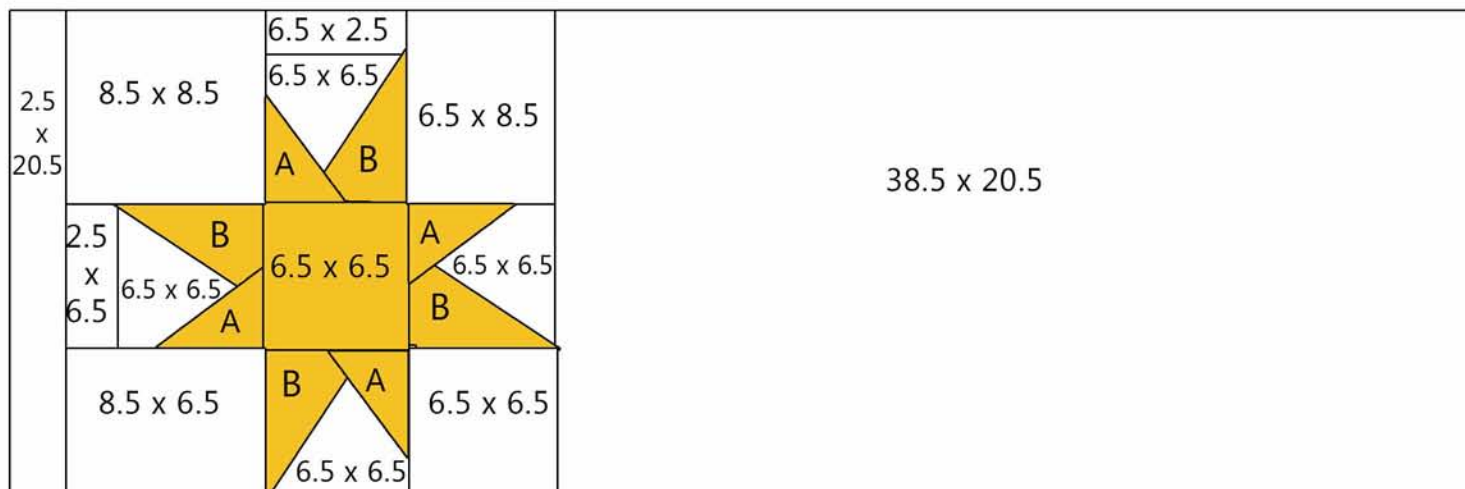


Diagram E

3. Take the (1) small triangle A and pin it across the newly formed square extending on each side beyond the square edge. Diagram C. *Note: The more you angle the triangle the more 'wonky' your sun point becomes.*
4. Stitch 1/4" seam and cut away excess fabric from square. Fold back and press. Diagram D
Trim excess fabric to line up with square. Diagram E
5. Repeat Steps 1 - 4 for the other 3 sun points.
6. Assemble Section 1 as shown in assembly diagram below and set aside.

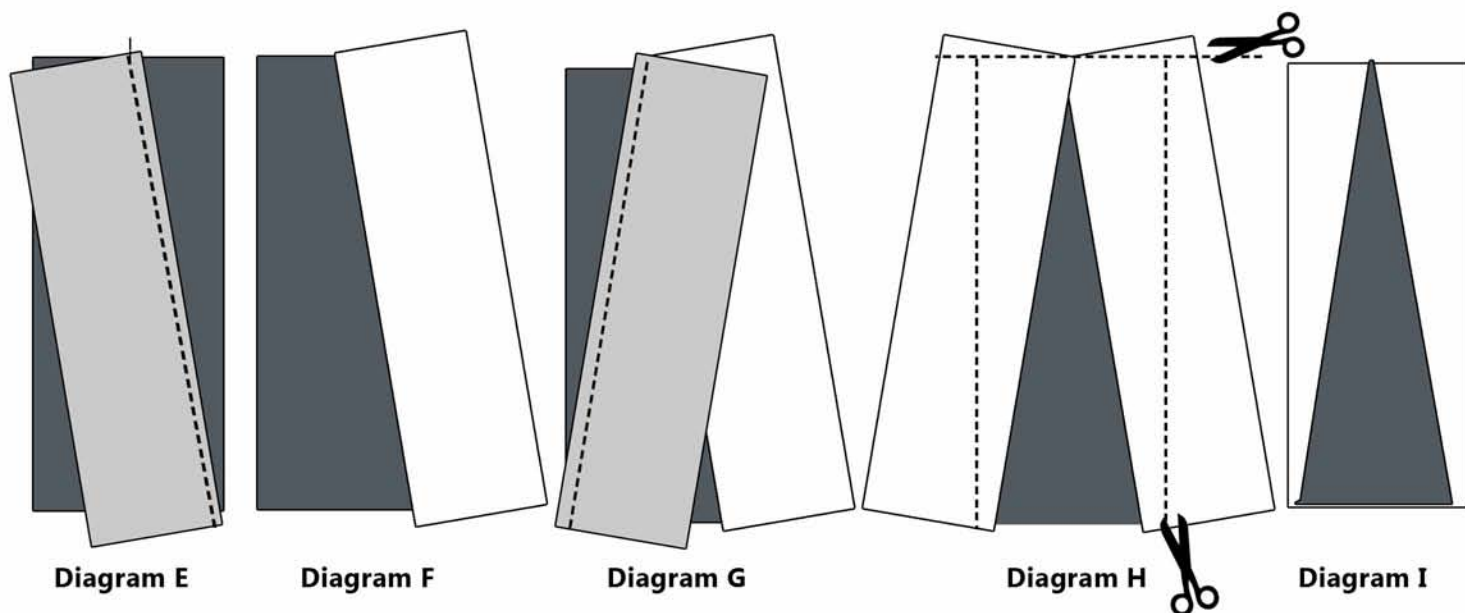
Assembly Diagram



Section 2

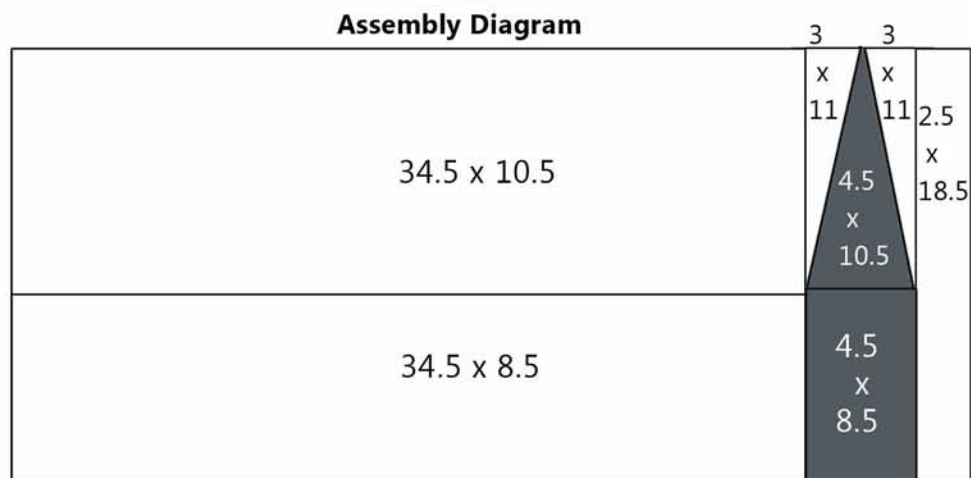
Building Spire

1. Take (1) 4.5" x 10.5" grey rectangle and place a mark at the top in the center. With right sides together, take (1) 3" x 11" white rectangle and place over grey rectangle with the end extending 1/4" past the center at the top and lined up at the bottom right corner. Diagram E Press seam flat. Diagram F



2. Take the other 3" x 11" white rectangle and repeat for the other side. Diagram G. Press seam flat. Trim the white rectangles to the same size as the 4.5" x 10.5" grey rectangle, then trim excess seam allowance way from grey triangle. Diagram H Final piece should look like Diagram I.

3. Assemble Section 2 as shown in assemble diagram below.



Cityscape

Page 5

Section 3

1. Assemble Section 3 as show in the assembly diagram.
Add the 2" x 2" black windows and door and applique them onto the building using your favorite method. Diagram I

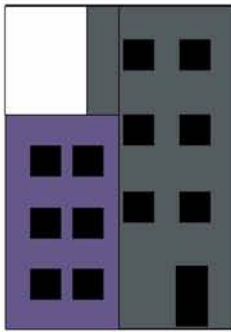


Diagram I

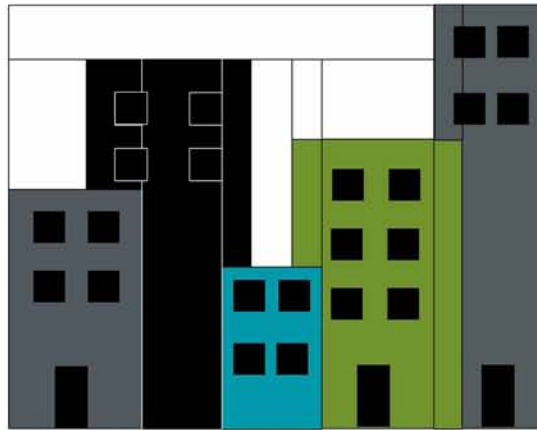
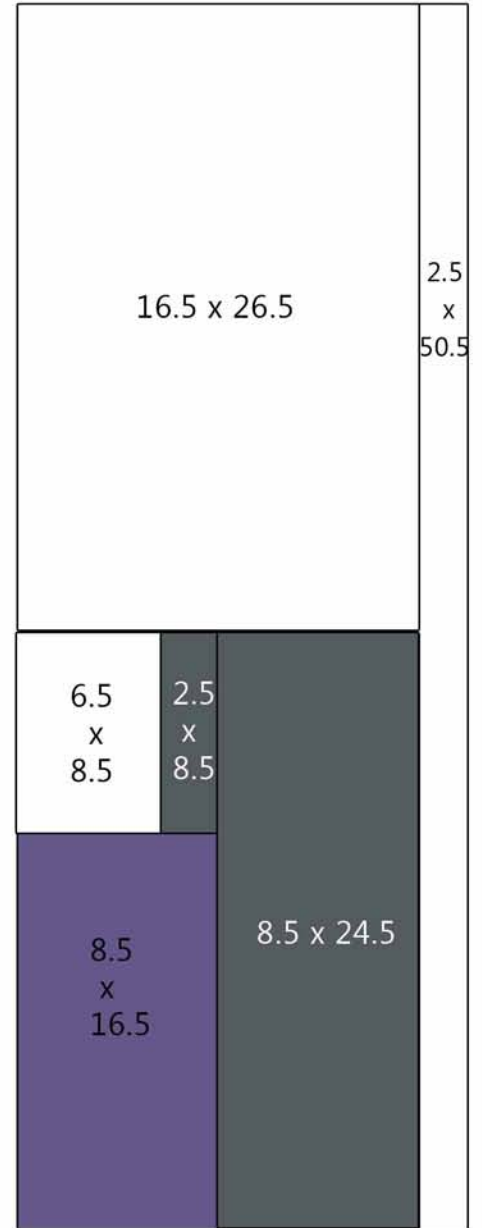


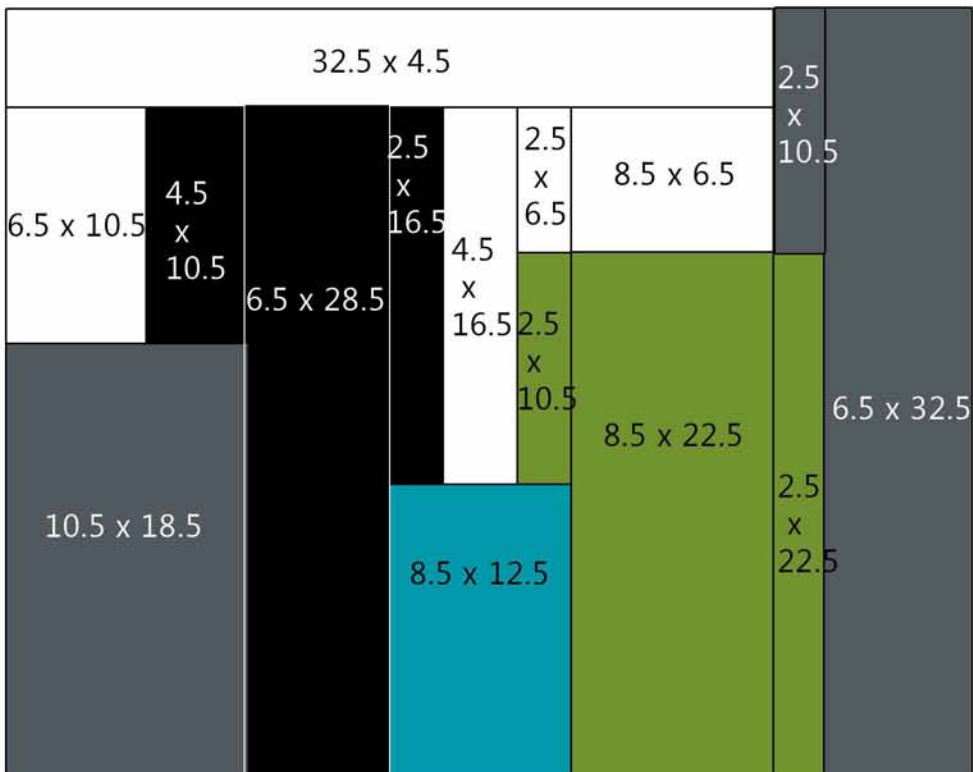
Diagram J

Assembly Diagram Section 3



Section 4

2. Assemble Section 4 as show in the assembly diagram.
Add the 2" x 2" black windows and doors and applique them onto the building as shown. Diagram J



Assembly Diagram Section 4

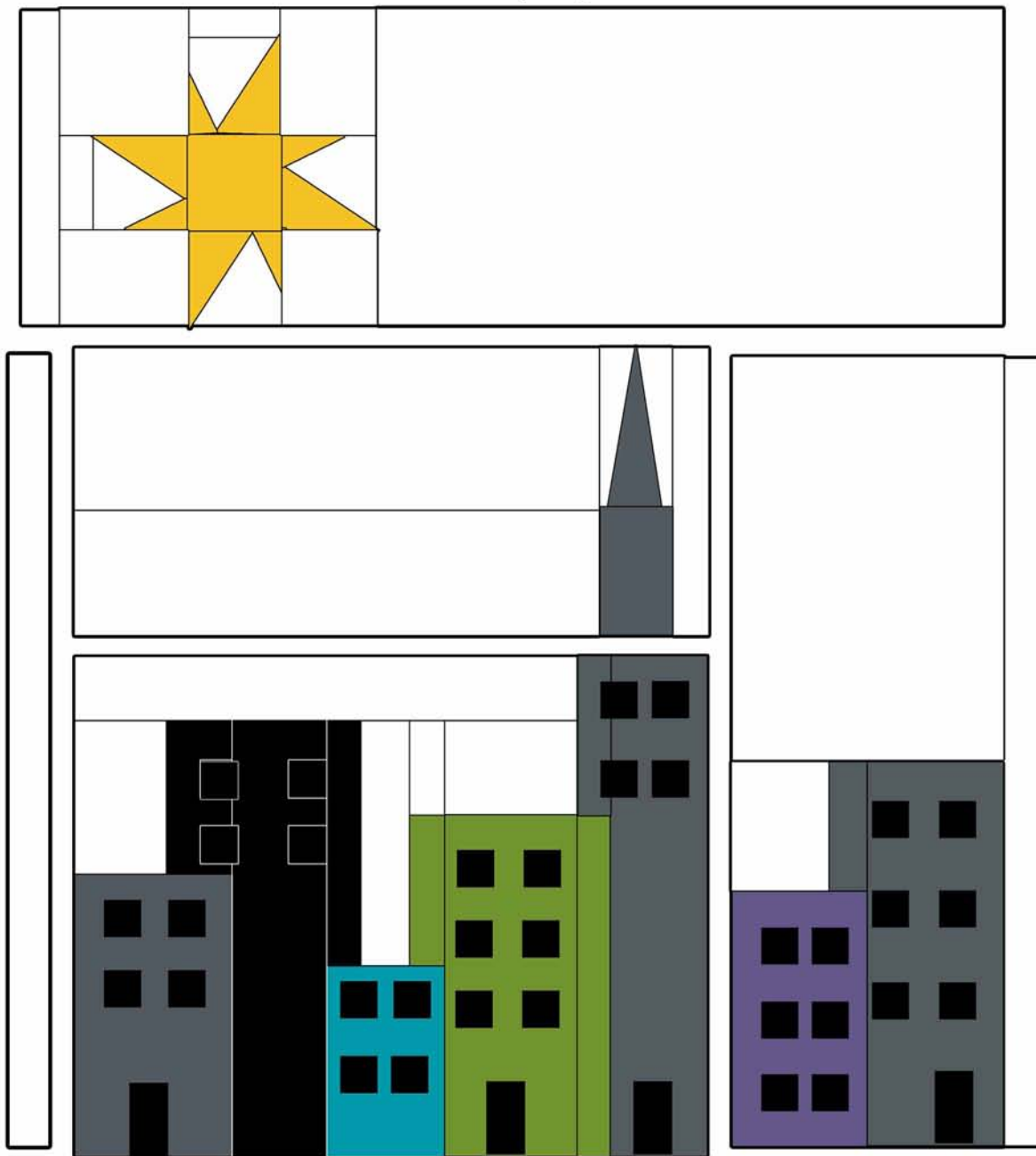
Cityscape

Page 6

Final Assembly

1. Assemble the 4 Sections as show in the Final Assembly Diagram. Add the 2.5" x 50.5" strip to left side.
2. Quilt using your favorite method and bind.

Final Assembly Diagram



Be sure to visit www.windhamfabrics.com to see the complete collection
and to download other Free Projects