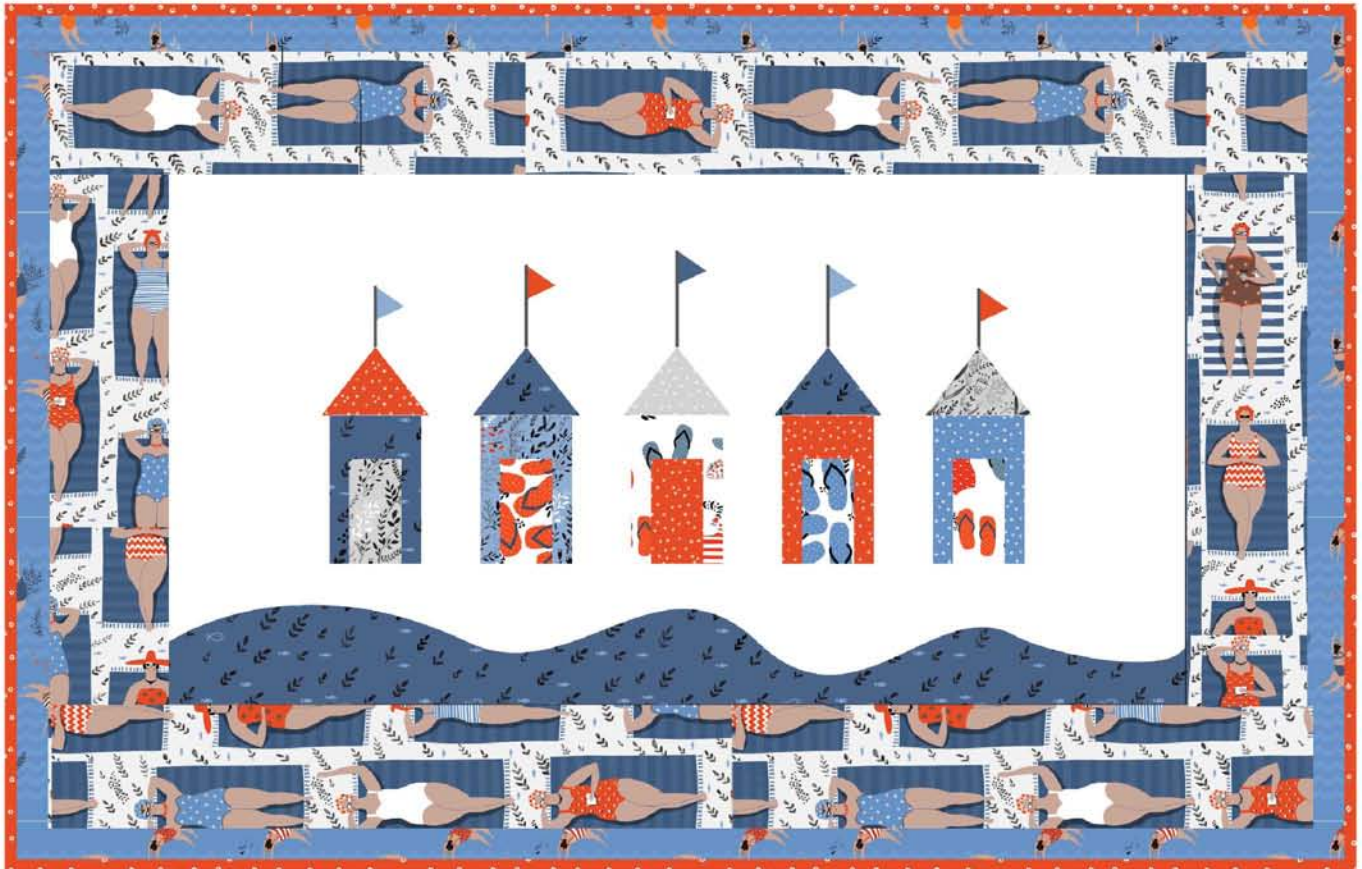


# “Cabana Lane”

Designed by Erin Schlosser, Schlosser Designs  
Featuring the “Swim Team” collection by Dinara Mirtapilova  
Finished Size: 19 x 29”



Check [www.windhamfabrics.com](http://www.windhamfabrics.com) Free Project section to see if there are any pattern updates before you start your quilt

WINDHAM FABRICS

812 Jersey Ave ~ Jersey City, NJ 07310 ~ 201.659.0444 ~ FAX: 201.659.9719  
[www.windhamfabrics.com](http://www.windhamfabrics.com) email: [retail@windhamfabrics.com](mailto:retail@windhamfabrics.com)

# "Cabana Lane"

Page 2



39324-X



39325-X



39326-X



39327-1



39327-2



39328-2



39328-3



39329-4



39329-5



39330-1



39330-2



39330-3

## Materials Required

1/3 yard solid white for background

1/3 yard 39324-X Multi for inner border \*\* (See below)

1/8 yard 39325-X Multi for outer border

1/8 yard each of the following: 39329-4 Dark Blue, 39330-1 Red, 39328-3 Grey, 39328-2 Blue, 39327-1 Red, 39326-X Multi, 39330-3 Grey, 39327-2 Blue, 39330-2 Blue

1/4 yard 39330-1 Red for binding

1/2 yard 39327-2 Blue for backing

\*\* (This will require piecing the longer border. If you want to fussy cut and not piece the longer border, you will need 3/4 yards.)

## Cut

### White Background

Cut (1) 10 1/2" x 20 1/2" rectangle

### 39324-X Multi

Cut (2) 3 1/2" x 10 1/2" strips

Cut (2) 3 1/2" x 26.5" strips

### 39325-X Multi

Cut (2) 1 1/2" x 16.5" strips

Cut (2) 1 1/2" x 29" strips

### 39330-1 Red

(3) 2 1/2" x WOF strips for Binding

# “Cabana Lane”

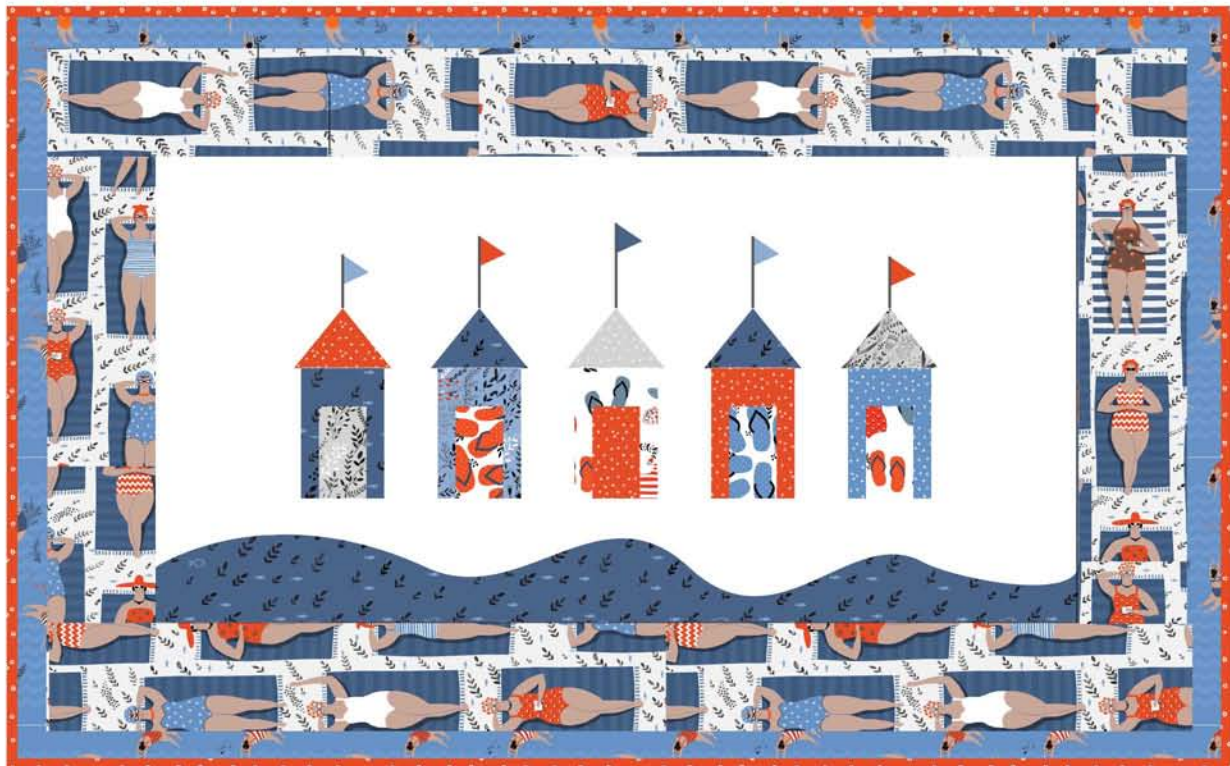
Page 3

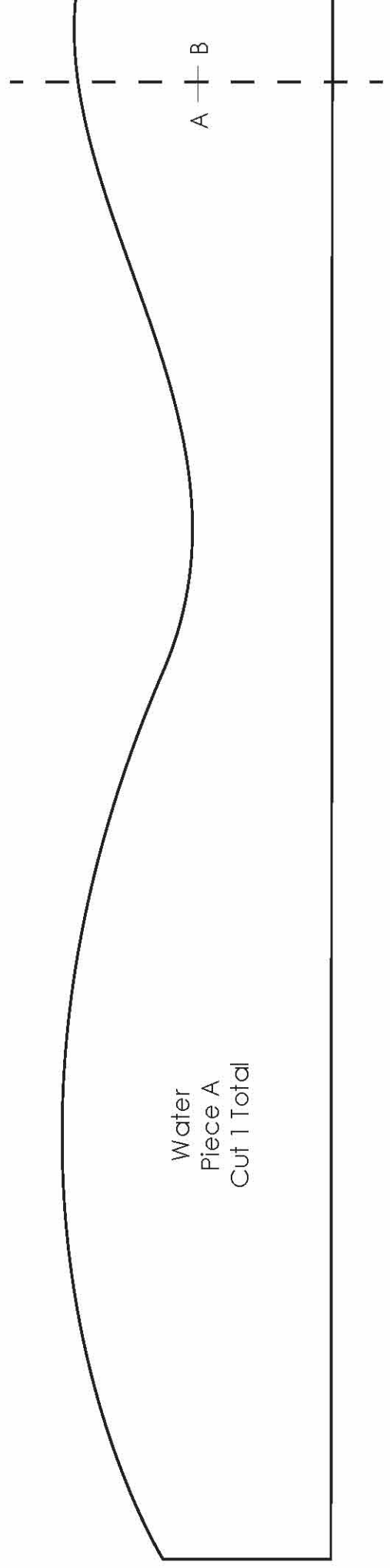
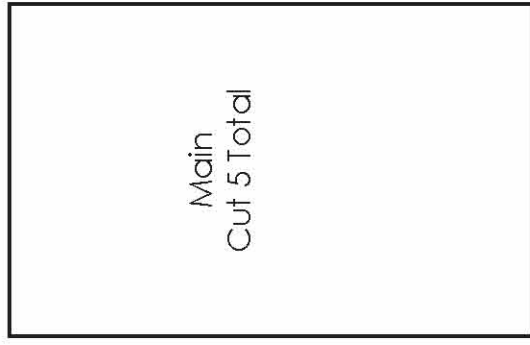
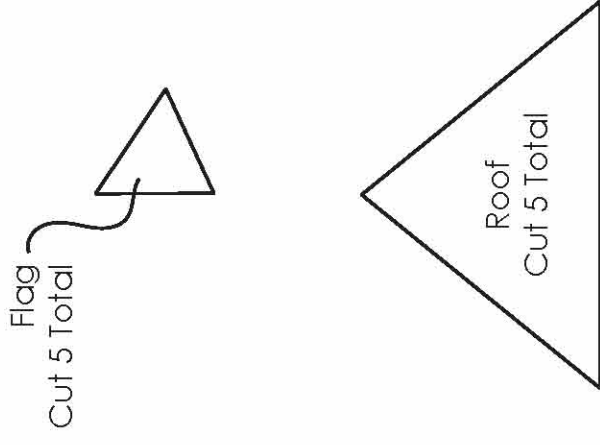
After ironing all pattern templates to the appropriate fabrics, cut out, layout on the white fabric rectangle and iron into place. Start by adding the blue water piece first, then the center cabana. After that, add the remaining cabanas on either side of the center one.

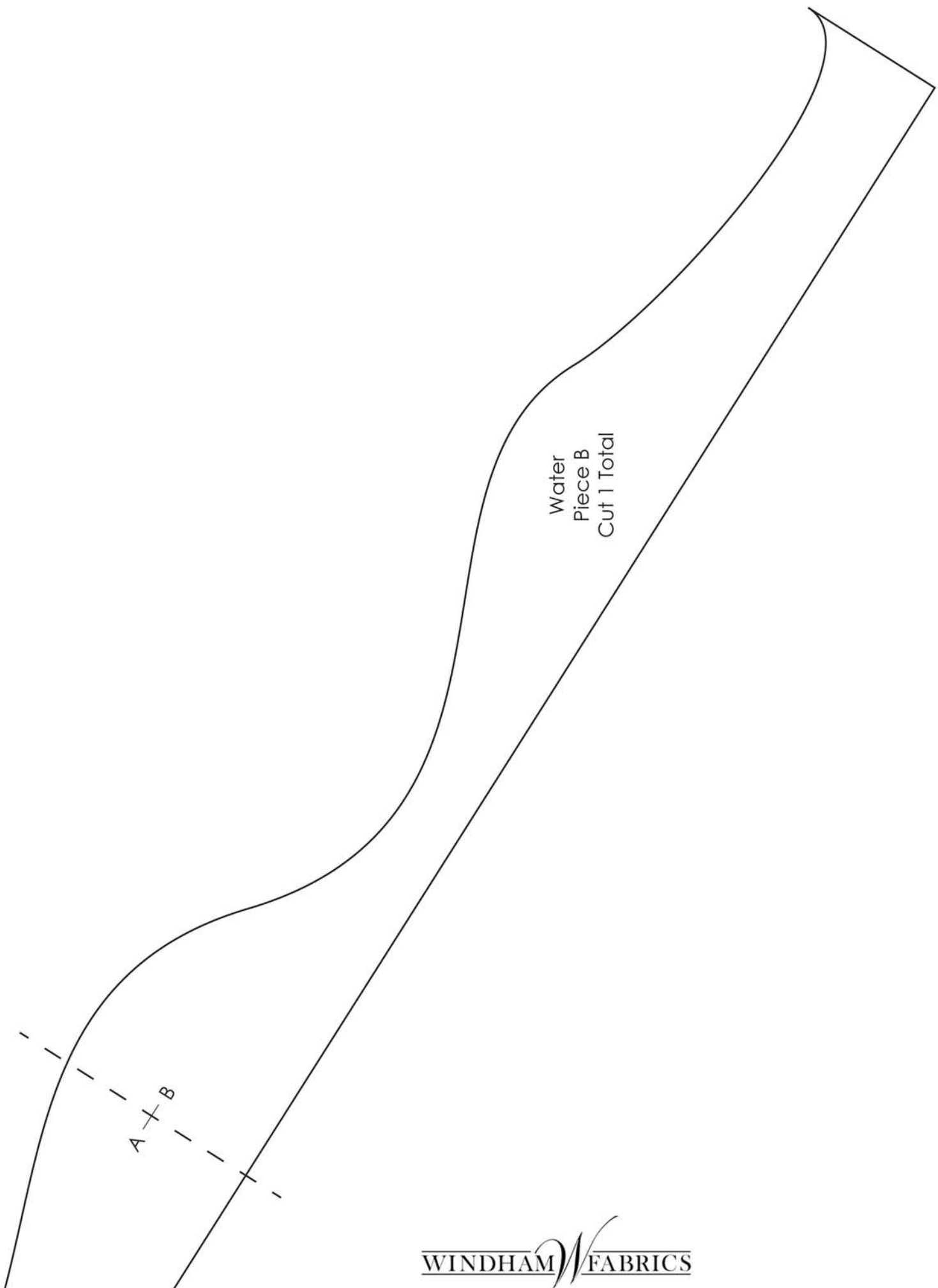
Use an appliqué stitch or straight stitch to secure all the pieces in place. Add the flag poles connecting the flag to the top of each cabana by hand embroidering a line with coordinating embroidery floss or cotton pearl thread.

Add on the shorter 3 1/2" wide strips to the sides first, then the longer 3 1/2" strips to the top and bottom. Finally, add on the shorter 1 1/2" strips to the sides, then the longer 1 1/2" strips to the top and bottom.

Quilt and bind as desired.







Water  
Piece B  
Cut 1 Total