

"Berry Good Cocktail Apron"

Written by Irene Berry
Featuring the Strawberry Picnic Collection by Whistler Studios



WINDHAM FABRICS

812 Jersey Ave ~ Jersey City, NJ 07310 ~ 201.659.0444 ~ FAX: 201.659.9719
www.windhamfabrics.com email: retail@windhamfabrics.com

"Berry Good Cocktail Apron"

Written by Irene Berry
Featuring the Strawberry Picnic Collection by Whistler Studios

The design of the apron was taking from a 1950's cocktail apron that works perfectly with the Strawberry Picnic patterns.

Fabric and Cutting

Fabric	Yardage	Cutting
31966-2 yellow	5/8	(2) 8 1/2" x 22" rectangles (2) 6 1/2" x 22" rectangles
31970-1 blue	1/2	(4) 3 1/2" x 22" rectangles
31967-1 blue	1/4	(2) 2 1/2" x 22" rectangles
31966-1 blue	1/4	(1) 5" x 18 1/2" rectangle for waistband
31973-1 blue	fat 1/8	1 pocket
1930's Solids		
25030 red solid	1/8	(4) 1" x 22" strips
25027 yellow solid	1/4	(2) 3 1/2" x 27 1/2" strips for ties



25030



25027

Also needed: 2 1/2" yards 1/2" (medium) red rickrack



31966-2



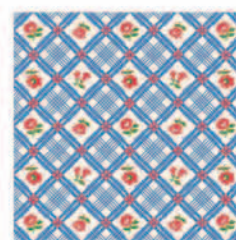
31967-1



31970-1



31966-1



31973-1

Note: These instructions refer to the "right" and "left" side of the apron as it will be when it is worn. When you look at the diagram and work facing the apron, the "right" side will appear on the left. The pocket is on the right side of the apron.

Assembly:

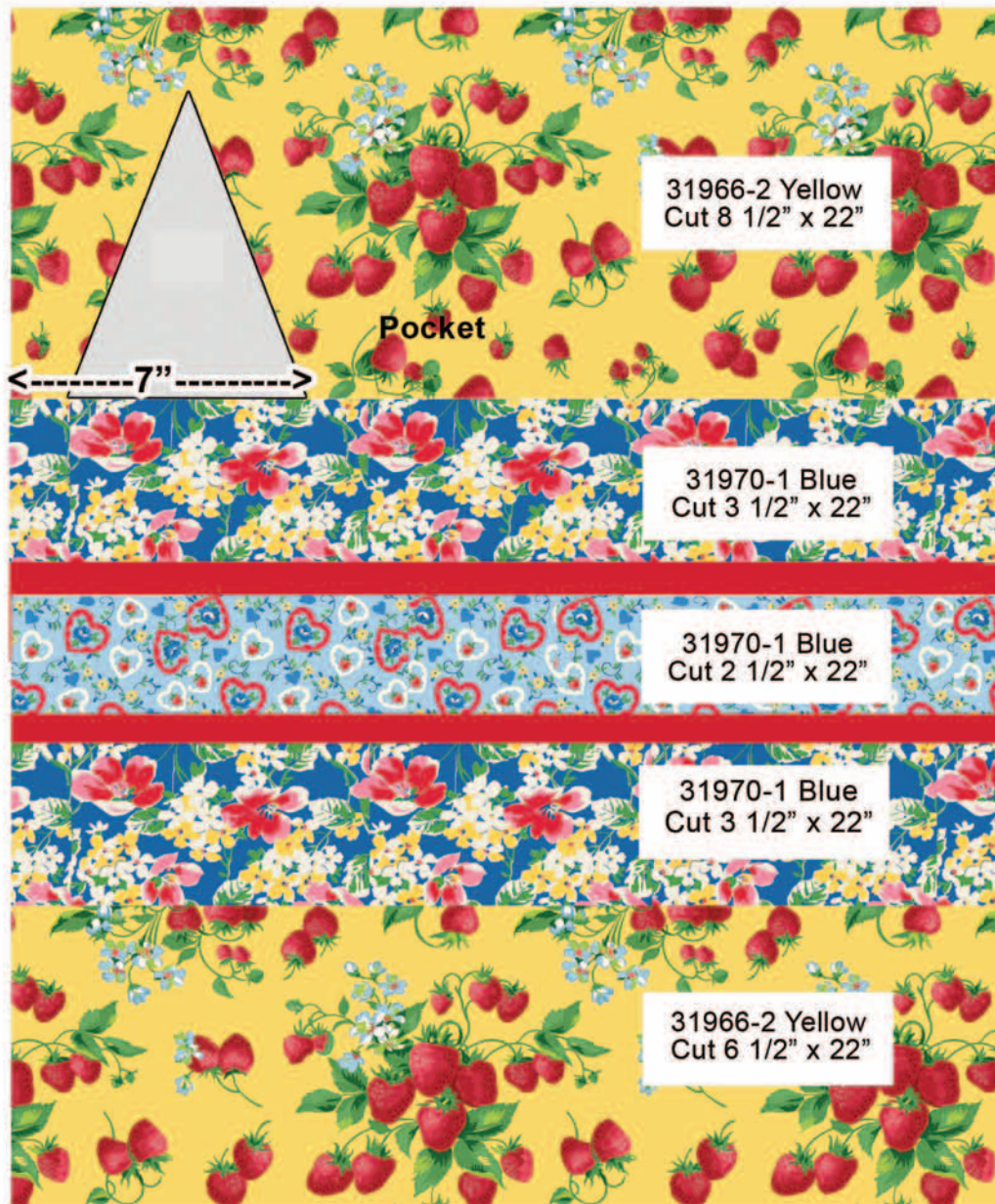
1. Fold the long raw edges of the pocket 1/4" to the wrong side and press. Cut a strip of rickrack the length of the left edge. Pin the rickrack to cover the edge, centering it over the fold. With matching thread, topstitch along the center of the rickrack, being sure to secure the folded edge at the same time.
2. Referring to the apron piecing diagram (on following page), align the bottom raw edge of the pocket with the bottom raw edge of an 8 1/2" x 22" yellow print rectangle. The inner point of the pocket should be 7" from the left edge of the rectangle. Pin. With matching thread, topstitch close to the folded right edge. Baste along the bottom edge if desired.
3. Referring to the apron piecing diagram, add a 3 1/2" x 22" blue floral print rectangle, a red solid strip, a 2 1/2" x 22" blue heart print rectangle, a red strip, another 3 1/2" x 22" rectangle, and a 6 1/2" x 22" yellow print rectangle. Press after each addition.
Repeat to make the left side of the apron, omitting the pocket.



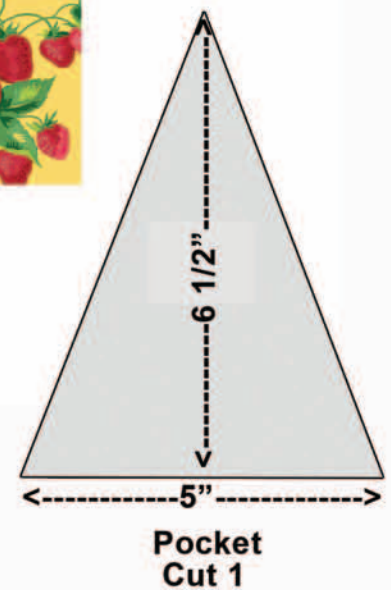
WINDHAM FABRICS

"Berry Good Cocktail Apron"

Page 2



Apron Piecing Diagram
Make 2

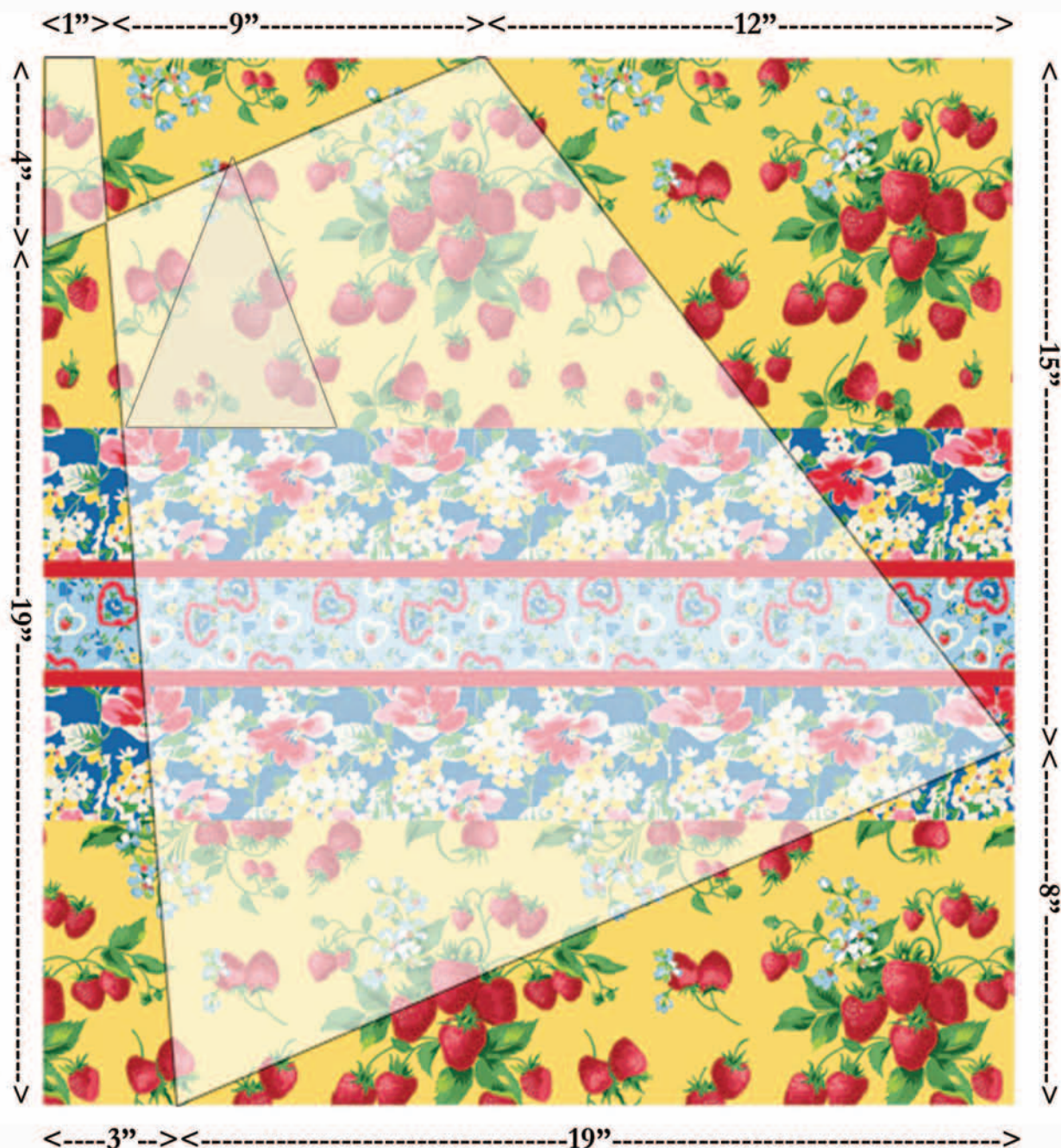


WINDHAM FABRICS

"Berry Good Cocktail Apron"

Page 3

4. Place the right apron panel (with the pocket) face up. Referring to the cutting diagram, measure the outside edges of the panel and mark where indicated. Using a rotary ruler and rotary cutter, trim the panel as shown. (Tip: Keep the upper left corner in place after cutting for reference until you are finished.) Repeat to trim the left side, this time placing the apron panel face down.



Apron Cutting Diagram



WINDHAM FABRICS

“Berry Good Cocktail Apron”

Page 4

5. Right sides together and matching seams, join the right and left sides of the apron along the center. With the apron still right sides together, trim the lower corners to round them slightly. Press the seam allowances open. Press the side and bottom raw edges $\frac{1}{4}$ " to the wrong side. In the same manner as for the edge of the pocket, pin rickrack all along the folded edges, centering it over the fold. With matching thread, top stitch along the center of the rickrack, being sure to secure the folded edge at the same time. Set it aside.
6. Turn under both long edges and one end of a tie and press. Topstitch. Fold the end at a 45-degree angle and press. Topstitch where the edges meet. Repeat for the second tie.
7. Press under $\frac{1}{4}$ " along one long edge of the waistband. Matching centers, sew the unpressed long raw edge of the waistband to the top edge of the apron. Start and stop the stitching $\frac{1}{4}$ " away from the ends of the waistband, but be sure to catch the ends of the rickrack in the seams. Press the waistband away from the apron and then in half, right sides together, matching long edges. Press a pleat in the unfinished end of a tie so that the end of the tie now measures about $1\frac{1}{2}$ ". Baste close to the end to secure the pleat. Right sides together, insert the pleated end of the tie between the short raw edges of the waistband. Stitch the seam. Repeat for the other end of the waistband. Turn the waistband right sides out. Pin the turned-under edge of the waistband in place, being sure it covers the seam allowances. Topstitch close to all edges of the waistband.

ENJOY!



Be sure to visit www.windhamfabrics.com to see the complete collection
and to download this and other Free Projects

WINDHAM FABRICS